

Böhm
ORGELN | KEYBOARDS

SEMPRA 3.0 *PRO-LIB*

Installation and playing instructions

AMADEUS
Style Performance
Vol. 2

www.boehm-organs.com

AMADEUS Style Performance 2 for SEMPRA 3.0 - installation and playing instructions

Version 1.00, 15.10.2024

Art.-No. 42636AE

The information contained in this documentation may be changed without announcement and are subject to change without notice by Keyswerk Musikelektronik GmbH does not represent an obligation.

The description contains the current state of information at the time of going to press.

Changes of technical details compared to the descriptions, the information and illustrations in this manual are subject to change without notice.

Keyswerk Musikelektronik GmbH assumes no liability for program errors and for incorrect information in the documentation and its consequences.

© Keyswerk 2024

All rights reserved

Responsible for the content of this website

KEYSWERK Music Electronics GmbH

Sülbecker Str. 20-22

31688 Nienstädt

Germany

Phone: 05722 - 905088

Fax: 05722 - 287555

Internet <http://www.keyswerk.de>

E-mail info@keyswerk.de

Content

General.....	4
Installation.....	4
How to find the ASP 2 data?.....	6
Arpeggios in the ASP registrations	7
GST Plus in the ASP styles.....	7
Overview AMADEUS Style Performance 2 for SEMPRA 3.0.....	8
STYLES (Firm style bank 11).....	8
SONGS (Firm SONG bank 11: St.Bas. ASP).....	9

General

With this extensive style package you are always in "best accompaniment" when playing on your SEMPRA! With a lot of experience and attention to detail, our musicians have put together an exclusive and soundful style and preset package for the SEMPRA instruments. The AMADEUS Style Performance 2 offers you:

- 32 fantastic ASP Styles with mit **GST+ Guitar Strumming** guitar tracks and 4 dynamically increasing variations each, versatile!
- 32 SONGS (ASP Style Basics) matched to the styles, each with 4 sample presets per style (One Touch Presets). The SONGs also each contain a matching arpeggio assignment.

Installation

The ASP 2 data is installed in the instrument from the USB stick with the factory data that belongs to your SEMPRA.

The installation is carried out in the same way as described below, regardless of whether you install **ASP 2 for 3.0** as a full version or as an update of the previous ASP 2. The installation data is identical for both versions. If an earlier ASP 2 version is already installed, it will be updated by reinstalling the 3.0 version.

Attention: *If you have received the package as an "arc" file (archive file) by email, please first copy this file to the top directory of your factory data stick (or another USB stick, which must be formatted on your SEMPRA).*

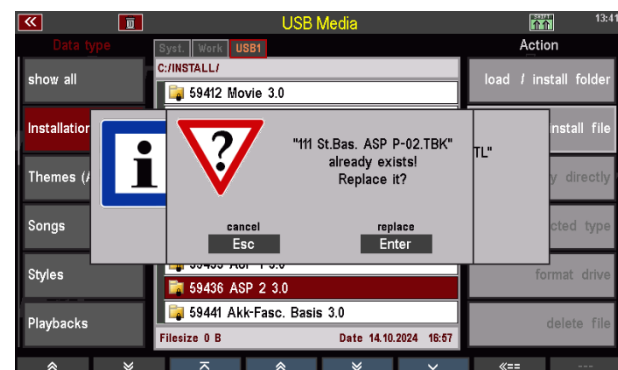
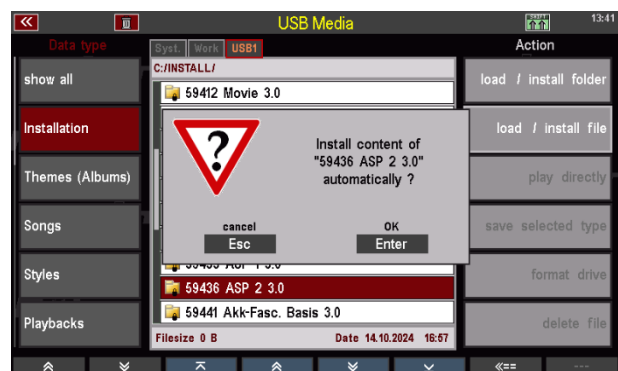
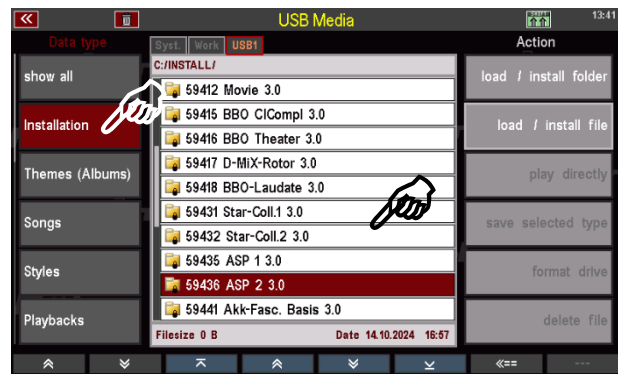
When the stick is inserted into the SEMPRA, the system recognizes the archive file and asks you whether the archive should be unpacked.

*Confirm with **ENTER**. The installation folder for the "ASP 2" package (and possibly the installation files for other packages supplied with the archive) will now be created on the stick (we recommend that you delete the arc file from the stick again after installation, as otherwise you will always be asked whether the file should be unpacked when you insert the stick in future). Insert the USB stick into one of the USB sockets of your SEMPRA.*



- Insert the USB stick into one of the USB sockets of your SEMPRA.
- Press the USB button to open the USB menu in the display.

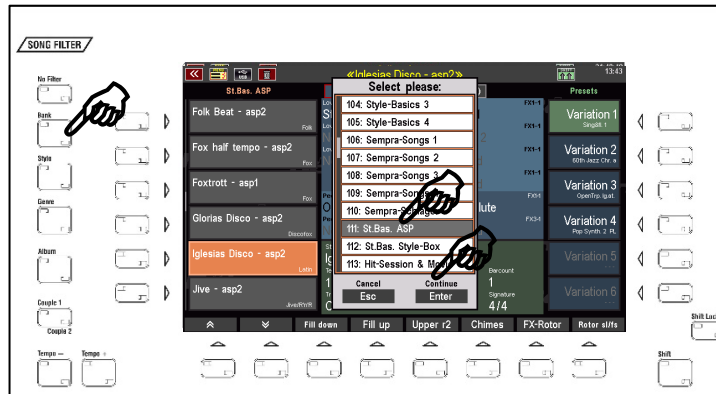
- Tap the **Installation** data type on the left (the field is displayed in red).
- Place the cursor on the folder "**59436 ASP 2 3.0**" using the **data wheel** or the up/down **cursor buttons** (do not open the folder!).
- Tap the "**Load/Install folder**" field on the right.
- The display asks whether you really want to install the data. Confirm with **[Enter]**.
- The data (styles and SONGs) will now be loaded.
- If you install **ASP 2 3.0** as an update over an existing **ASP 1**, the display will inform you that some files already exist. Confirm each of these queries with **[Enter]**. The new data will then be loaded and replace the previous versions.
- The **ASP 1** data is now loaded and ready to use.



Caution: Please note that factory data, including ASP 2, is always installed on an account-specific basis. If you use additional user accounts on your SEMPRA and the ASP 2 data is also to be used in these accounts, you may have to perform the installation again for these additional accounts!

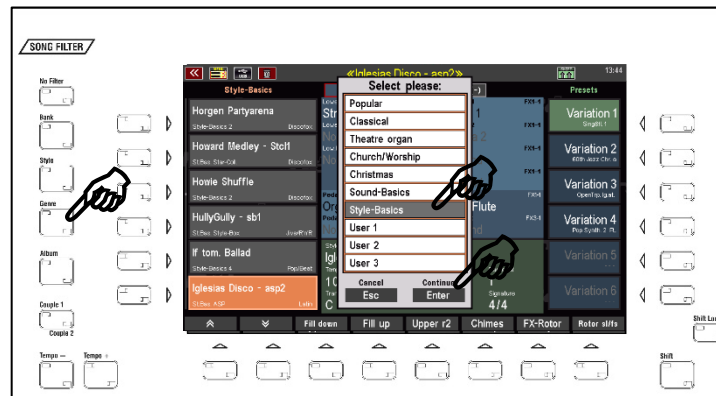
How to find the ASP 2 data?

The ASP 2 SONGS with the example presets can be found in the Firm SONGS bank 11 "St.Bas. ASP" (internal bank no. 111). Call up this bank e.g. via the SONG filter button [Bank] (press 2x, if not already selected) and then scroll to the corresponding bank position. Confirm with [Enter]. The SONG list on the left side of the display now shows the SONGs of ASP 2.



Alternatively, you can call up the STYLE BASICS genre for the SONG list. All ASP 2 SONGS are assigned to this genre.

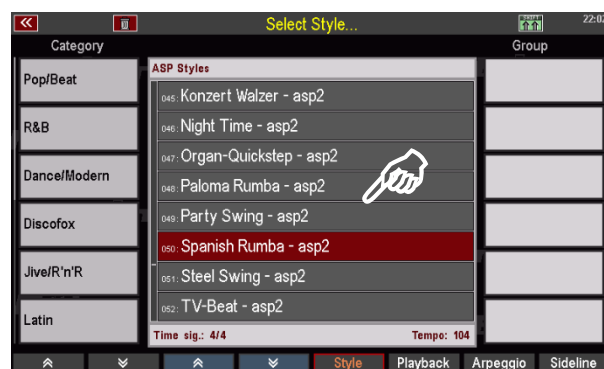
To do this, press the SONG filter button [Genre] (press 2x if necessary, if not already selected) and select the genre "Style Basics" from the list.



Confirm with [Enter]. The SONG list on the left now shows the SONGs of the genre "Style Basics", here among others the ASP SONGS.

SONGS of the ASP packages can be recognized by the abbreviation **asp1** or **asp2** in the SONG name.

The ASP-STYLES can be found in the Firm-Stylebank 11 (ASP). They are assigned to the corresponding categories and subgroups in the style selection. You can recognize ASP styles in the style selection by the abbreviation **asp1** or **asp2** in the style name.



Arpeggios in the ASP registrations

Arpeggios from the pool of factory arpeggio banks 1...3 are now also stored in many ASP 2 SONG presets. Attention: These arpeggios will only sound if the **SEMPRA Arpeggiator** app (art. no. 41162) is installed on the SEMPRA.

Registrations with a stored arpeggio can be recognized by a "tick" at the top of the Arpeggio field on the basic screen after being called up:

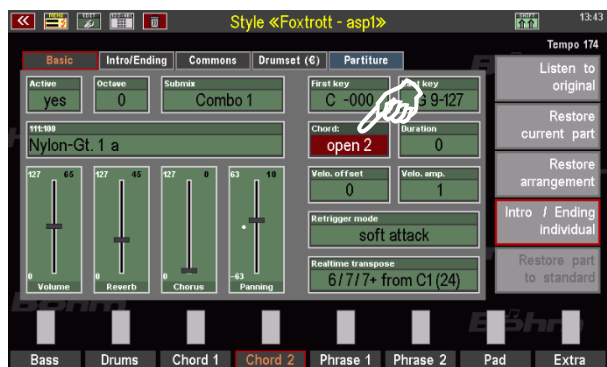
Attention! The arpeggios are not always immediately active when the preset is called up. However, they can be activated at any time and then play with.



GST Plus in the ASP styles

The ASP styles now also use the Böhm **GST** guitar technique with authentic guitar strumming and runs.

You can recognize the GST tracks in the Style Editor by the Chord parameter, under which the respective fingering or playing technique used is listed.



In addition, the new **GST Plus** guitar fingerings were used in many of the ASP styles. Here, the "guitarists" of the accompaniment also play chords in which only the lower or only the higher strings of the guitar are strummed.

Overview AMADEUS Style Performance 2 for SEMPRA 3.0

STYLES (Firm style bank 11)

Bank	Number	Name
111	033	Smoky Beat - asp2
111	034	60s Shuffle - asp2
111	035	Baby Back Beat - asp2
111	036	Ballade Angel - asp2
111	037	Christmas Waltz - asp2
111	038	Country Fox 2 - asp2
111	039	Country Shuffle 2 - asp2
111	040	20s Dixie - asp2
111	041	Fox half tempo - asp2
111	042	Fl.-Discofox 2 - asp2
111	043	Folk Beat - asp2
111	044	Jive - asp2
111	045	Konzert Walzer - asp2
111	046	Night Time - asp2
111	047	Organ-Quickstep - asp2
111	048	Paloma Rumba - asp2
111	049	Party Swing - asp2
111	050	Spanish Rumba - asp2
111	051	Steel Swing - asp2
111	052	TV-Beat - asp2
111	053	8-Beat 2 - asp2
111	054	Barry Disco - asp2
111	055	Country Rock - asp2
111	056	Country Boogie - asp2
111	057	Disco Survive - asp2
111	058	Glorias Disco - asp2
111	059	Iglesias Disco - asp2
111	060	Lion Ballad - asp2
111	061	Mid Shuffle - asp2
111	062	Northern Beat 2 - asp2
111	063	Moore Blues - asp2
111	064	Northern Shuffle 2 - asp2

SONGS (Firm SONG bank 11: St.Bas. ASP)

Bank	Number	Name
111	033	Spanish Rumba - asp2
111	034	Smoky Beat - asp2
111	035	60s Shuffle - asp2
111	036	Baby Back Beat - asp2
111	037	Ballade Angel - asp2
111	038	Christmas Waltz - asp2
111	039	Country Fox 2 - asp2
111	040	Country Shuffle 2 - asp2
111	041	20s Dixie - asp2
111	042	Fox half tempo - asp2
111	043	Fl.-Discofox 2 - asp2
111	044	Folk Beat - asp2
111	045	Jive - asp2
111	046	Konzert Walzer - asp2
111	047	Night Time - asp2
111	048	Organ Quickstep - asp2
111	049	Paloma Rumba - asp2
111	050	Party Swing - asp2
111	051	Steel Swing - asp2
111	052	TV-Beat - asp2
111	053	8-Beat 2 - asp2
111	054	Barry Disco - asp2
111	055	Country Rock - asp2
111	056	Country Boogie - asp2
111	057	Disco Survive - asp2
111	058	Glorias Disco - asp2
111	059	Iglesias Disco - asp2
111	060	Mid Shuffle - asp2
111	061	Northern Beat 2 - asp2
111	062	Moore Blues - asp2
111	063	Northern Shuffle - asp2
111	064	Lion Ballad - asp2



BÖHM Orgeln

KEYSWERK Musikelektronik GmbH

Warbersche Str. 32

31675 Bückeburg

Germany

Tel.: 05722 905088

Internet www.boehm-orgeln.de

E-Mail info@boehm-orgeln.de