

**Böhm**  
ORGELN | KEYBOARDS

# SEMPRA 3.0 PRO-LIB

Installation and playing instructions

---

BÖHM – FAMOUS ORGANS

CLASSIC

COMPLETE 3.0



[www.boehm-organs.com](http://www.boehm-organs.com)

BÖHM FAMOUS ORGANS - CLASSIC COMPLETE  
for SEMPRA 3.0 – Installation and playing instructions

version 1.00, 19.10.2024

Item no. 42616AE

The information contained in this documentation is subject to change without notice and does not constitute a commitment on the part of Keyswerk Musikelektronik GmbH.

The description is based on the information available at the time of printing.

The display illustrations shown in this manual are only examples and may differ from the actual displays on your instrument.

Technical details are subject to change without notice compared to the descriptions, specifications and illustrations in this manual.

Keyswerk Musikelektronik GmbH cannot accept any liability for program errors and incorrect information in the documentation and their consequences.

© Keyswerk 2024  
All rights reserved

Responsible for content:

**BÖHM Organs**  
**KEYSWERK Musikelektronik GmbH**  
**Sülbecker Str. 20-22**  
**31688 Nienstädt**  
**Germany**  
**Tel.: +49 (0) 5722 905088**  
**Internet [www.boehm-organs.com](http://www.boehm-organs.com)**  
**E-Mail [info@boehm-organs.com](mailto:info@boehm-organs.com)**

## Content

General information .....	4
The Stops .....	4
The SONGS/SONG Presets (“Setzer“) .....	6
Pedal stops .....	6
The SONG banks .....	6
Abbreviations used in the SONG names .....	7
CLASSIC COMPLETE button assignment .....	7
Other playing instructions .....	7
CLASSIC COMPLETE Installation .....	8
Own user account for the church organ playing .....	8
1. Complete new installation of CLASSIC COMPLETE .....	9
2. Installation of only CLASSIC COMPLETE Update 3.0 .....	12
Calling up CLASSIC COMPLETE stops and SONG presets .....	12
The stops .....	12
Registrations / SONGs and SONG-Presets .....	13
CLASSIC COMPLETE button preset .....	15
Appendix .....	16
Sound presets (single and combination stops) .....	16
SONGS (registrations) „CLASSIC COMPLETE“ .....	18

## General information

Böhm organs have always performed exceptionally well, especially in the field of classical and sacred organ music! With the CLASSIC COMPLETE software package from the **Böhm - famous organs (BBO)** package series, you can experience the whole world of classical organ music on your SEMPRA in a perfection that has probably never before been heard on an electronic "universal" organ!

In this version for SEMPRA 3.0 we have optimized the sounds of CLASSIC COMPLETE in many details! Every stop of the sacral and toccata sound material has been thoroughly checked. Detailed improvements have been achieved in 92 stops. Your own church organ registrations from SEMPRA 2.0 can be played again immediately, as all sounds/stops have remained in their usual positions.

The stops in the CLASSIC COMPLETE software are a huge selection from different organs and eras. The total of 642 registrations from the CLASSIC COMPLETE software have been completely revised for the new 3.0 version. In the sorting (SONG filter) you will now find the CLASSIC COMPLETE registrations in the group **Sound Basics**.

With more than 240 individual stops and stop combinations as well as 2 banks with 43 or 64 perfectly arranged SONGs sorted by stop type, each with 6 individual presets, you can play the works of the great masters with the perfect sound of a large church organ. The registrations in CLASSIC COMPLETE make extensive use of the "Distance" function, with which the individual pipework or stops in the registrations can be positioned individually in the depth of the room. Depending on the intensity, you can use this parameter to achieve different auditory impressions, for example, which correspond (more directly) to the impression of the organist playing directly at the organ or (more diffusely) to the impression of the listeners in the nave. The distance values have also been adjusted part by part in this 3.0 version of CLASSIC COMPLETE. The designation "weit" (wide) has been added for registrations in which a greater distance between the listener and the organ is simulated.

## The Stops

The tonal basis of CLASSIC COMPLETE is formed by the excellent samples from the basic package "Böhm - famous organs". The stops and stop combinations of the church organ sounds have been created from these samples. The installation of the samples from the basic package "Böhm - famous organs" is therefore a prerequisite for the use of CLASSIC COMPLETE.

Sound banks **20 (BBO Toccata)** and **23 (BBO Sacral)** contain the usual basic organ registers. The stops of sound bank 23 (BBO Sacral) are very "straightforward", intoned close to the original sample. They are programmed in a particularly voice-saving way (number of sounding "generators") so that a broad registration can be built up in all playing situations. Nevertheless, the stops and stop combinations sound balanced and versatile.

Sound combinations such as principals 8'- 4'- 2' are available in two variants on the bank 23: on the one hand as a complete recording and on the other hand consisting of actual individual stops which are put together to form the respective combination. The latter combination naturally sounds much broader, as the integrated C/C# separation (radiation of the individual notes from different positions within the stereo base, as with a real pipe prospectus) is fully effective here. In contrast, the overall recording sounds rather central, almost centered. This characteristic can be utilized very well if certain other stops are to be positioned around such a stop. Both types of combination are therefore justified depending on the application! In the case of mixtures, there are also these variants of complete recordings on the one hand and stops composed of individual components on the other.

The stops of sound bank 23 have a narrower C/C# separation than the stops of bank 20. If you use stops from both banks, you can create extremely broad and yet differentiated soundscapes. Depending on the playback system used, the positions of the registers can be optimally reproduced. Some organ pipes seem "close enough to touch".

If available on your SEMPRA, experiment a lot with the "**Distance**" function from the SEMPRA "Sound Controller" app (art. no. 41153) when creating your own registrations. This allows you to achieve not only a width effect through the different right/left panoramas, but also a depth gradation of the stops. You can find out whether the app is already installed on your organ in menu 8 System settings - 4 Enable. A green tick here indicates that activation has been activated in the "Sound Controller" line. If the app is not yet activated on your instrument, we strongly recommend that you purchase it here, as the registrations in the CLASSIC COMPLETE 3.0 package make full use of this valuable function and therefore only develop their full tonal potential when the distance function is available. (for more details see price list, or on request).

Sound bank **20 (BBO Toccata)** is also based on the samples of the "Böhm famous organs" extension. However, the simultaneous use of several sample components means that other variants of the stops are available here. These stops are incredibly lively, especially when played solo. However, this exquisite sound behavior of the individual stops also costs correspondingly more voices. There are certainly individual stops that use up 3 or 4 generators when a key is pressed. Especially when playing on the "smaller" SEMPRA models with only one AMADEUS sound system, this should be taken into account when registering. With the Part Extension 1 and 2 including a second AMADEUS sound module, you are of course on the safe side here and can utilize the various registration options even more flexibly. For those who like to play a lot of classical organ music on their SEMPRA, these extensions are particularly recommended (for more details see price list, or on request).

However, in order to be able to record in a full and versatile way, especially if only one sound system is available, it is best to combine registers from both sound banks 20 and 23.

The elaborate sound and volume tuning as well as the C/C# separation form the core of the CLASSIC COMPLETE software alongside the high-quality sample material. Many different organs (originals and modern digital organs) were listened to and analyzed during the creation of this software. We have compiled the best of the results for you.

The Böhm organ with its flexible sound system enables the organist to register both strictly according to epochs and completely freely and creatively. The Böhm is certainly the only digital organ that allows you to combine so quickly and flexibly without having to load other samples or voicings first.

A list of all the individual and combination stops contained in the two sound banks can be found in the appendix to these operating instructions.

## The SONGS/SONG Presets (“Setzer“)

So that you can start playing straight away, CLASSIC COMPLETE comes with 2 banks of 43 and 64 SONGS respectively. Each of these SONGS contains 6 individual registrations (global presets), which have been created true to style from the individual and combination registers of the software.

With many presets it is possible to add a **tremulant** using modulation wheel 1.

By the way: In almost all CLASSIC COMPLETE registrations we have kept the volume of the individual registers predominantly at a value of 110. This means that a quick adjustment upwards (up to 127) is also quickly possible.

## Pedal stops

The tonal foundation of the sacred organ is of course the pedal with its special bass stops. And while a single bass timbre is often sufficient in light music (after all, every band usually only has one bass player), the pedal in the (pipe) organ also lives from the sound variations resulting from the different stops and possible combinations. Here, as in the manuals, several stops are usually combined to create an overall timbre for the pedal.

## The SONG banks

The SONGS belonging to the CLASSIC COMPLETE package occupy the following firm song banks:

Firm Songs 20: bank „**Sacral**“ (37 + 6 SONGS)

Firm Songs 21: bank „**Toccata**“ (64 SONGS)

The SONGS themselves and the 6 registrations they contain are sorted in ascending order according to the number of stops. In the lower places you will find solo registrations and smaller combinations, in the upper places larger combinations up to large plenum registrations and the full work. The SONG designations provide you with information about the stop characters contained in each case.

## Abbreviations used in the SONG names

- H:** Hand bass: The bass is played on the manual, analogous to pedal-less pipe organs  
**DIR:** direct sound, shorter reverb (2 sec.), corresponds to the listening position at the console (SONGs 38 - 64 in the "Toccata" bank)  
**T:** Toccata (SONG bank 21)  
**ZR:** Reed stop

## CLASSIC COMPLETE button assignment

The CLASSIC COMPLETE package includes a separate assignment (button preset) for the F buttons below the display. Vocal phrases such as "Kyrie", "Hallelujah" and "Amen" as well as various bell effects can be called up here:



This button preset is used by the CLASSIC COMPLETE SONG presets and is called up with them, provided that the switching of the button assignments by the SONG presets is not prevented by the current setting of the preset coupler (button **[Couple 1/2]** to the left of the display) (tick set or not set).

## Other playing instructions

In all registrations, the tracks of the automatic accompaniment are muted, recognizable by the lit LEDs in the **[Mute]** buttons for the accompaniment groups Drums, Bass and Combo 1...3. Therefore, neither drums nor accompaniment can be heard when you press the **[Start]** button with a CLASSIC COMPLETE preset called up. The mutes must first be deactivated in order to hear the accompaniment.

A pipe organ has no manual splits! All registrations of the CLASSIC COMPLETE package therefore do not contain a split point in the lower manual. This setting (lower split canceled) has been saved in the individual presets.

If you return from a CLASSIC COMPLETE preset to a "normal" factory SONG preset, for example, the global lower split point will probably not be set again, as it is not available as a function in the newly selected preset.

Therefore, press the **[Clear Reg.]** button once before you return from playing with CLASSIC COMPLETE to the standard presets. This ensures that the global lower split intended for the standard presets is preset again.

Our sample SONGS/presets are intended to show you a broad cross-section of registration and style variations. Of course, after an initial journey of sound discovery through the software using these examples, you should register your organ yourself as you like it or find it optimal. CLASSIC COMPLETE now provides you with the best tonal basis for this.

But now you should get started right away! In the following section of these operating instructions, we explain how to install the CLASSIC COMPLETE package on your SEMPRA.

## CLASSIC COMPLETE Installation

### Own user account for the church organ playing

Thanks to BBO CLASSIC COMPLETE and the new BBO "Laudate" package for SEMPRA 3.0, the scope of registrations for the church organ play has become so extensive that **we strongly recommend installing these BBO packages in a separate user account!** This is not a question of disk space, but merely of a better overview!

For example, the BBO CLASSIC COMPLETE SONG registrations were sorted into the "Sound Basics" genre, while those in the LAUDATE package were sorted into the "Church/Worship" genre. This means that when you switch genres (SONG filter button [Genre]), you can quickly access either the CLASSIC COMPLETE registrations or those for the 90 chorales in the LAUDATE package.

If you were to install all BBO packages in your main account (which also contains all other SEMPRA registrations for light music), the genre list of SOUND Basics, for example, would become extremely "bloated" and therefore confusing due to the many BBO SONGs. **Also, for example, the SONG banks of the new sacral software "BBO Laudate" occupy the same firm SONG bank numbers (123 and 124) as the SONG bank packages "SONG-BOX 1" (Claus Riepe) and "Stage, Screen & Evergreen" (Dirk-Jan Ranzijn) for light music.**

It is therefore essential that you use the SEMPRA-exclusive option of a separate user account purely for the church organ game and install the BBO Classic Complete and, if applicable, Laudate packages in this account. If you want to play church organ, simply switch to this "sacred user account".



- Now create a new user account for the BBO sacral packages and start this account (for more information on user accounts, please refer to the corresponding chapter in the main instructions for SEMPRA 3.0).



When installing BBO CLASSIC COMPLETE for SEMPRA 3.0, the required data (sample and sound data for the AMADEUS sound module(s), the sound presets and the SONGS/global presets) are installed from the installation folder of the data stick that you received with your SEMPRA.

A prerequisite for using the CLASSIC COMPLETE package (and also the BBO packages "Laudate" and "Theatre organ") is the availability of the special samples from the basic package for "Böhm - Famous Organs" (art. no. 42315). This is therefore also installed during the initial installation (see also notes in the following installation description).

If there are several AMADEUS sound systems in your SEMPRA, the sound data can be installed automatically for all sound systems at the same time.

**Note:** The BBO packages "Classic Complete" and "Theater Organ" are part of the standard equipment of the SEMPRA organs SE70/80/100 and 480/500SE/600SE and are already pre-installed. However, if these instruments are upgraded to SEMPRA 3.0, the Classic Complete Version 3.0 update must be reinstalled in a new "Sacral" user account - as with all other models. See the following step 2 Installation **Classic Complete Update 3.0**.

## 1. Complete new installation of CLASSIC COMPLETE

This complete installation is only necessary,

- if you purchase BBO CLASSIC COMPLETE for your SEMPRA 3.0 Pro-Lib and install it for the first time, or
- if you have upgraded your previous SEMPRA 2.0 to the SEMPRA 3.0 Pro-Lib version. The complete reinstallation will install the sound updates 3.0 for the sacral registers of the BBO.

You will receive the following BBO folders on the installation USB stick:

**BBO Basis 3.0**            Activation of the samples for the BBO church and theater organ packages

**BBO-CI.Cpl.Basis 3.0**   Sound data for CLASSIC COMPLETE

**BBO-CI.Compl. 3.0**    SONGs (registrations), sound presets etc. for BBO CLASSIC COMPLETE

**Note:** If you also own the BBO Theater Organ, you will also find the folders BBO Thea.Basis 3.0 and BBO Theater 3.0.

If you also have the BBO-Laudate software, you will also find the BBO-Laudate 3.0 folder on the stick with the installation data for the Laudate software.

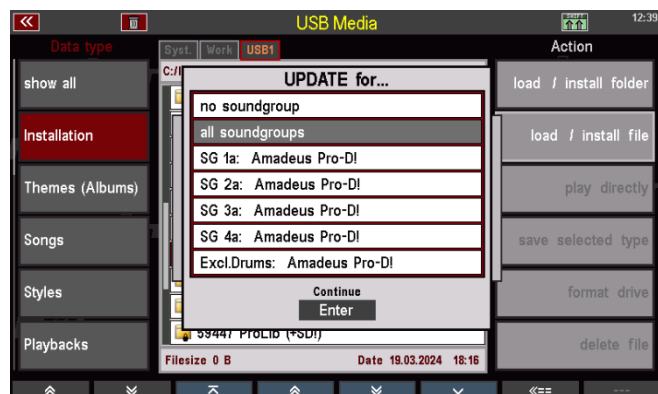
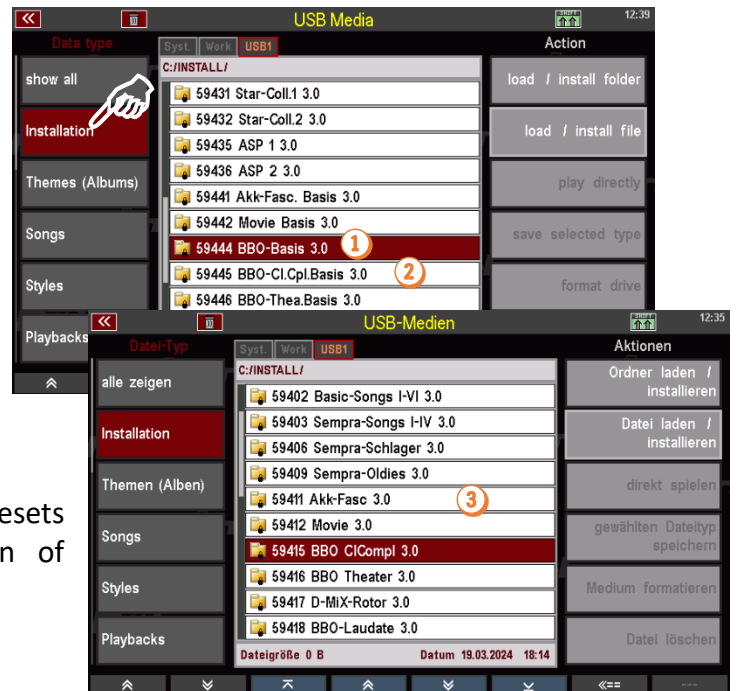
The BBO Theaterorgel and Laudate software packages are installed accordingly, as described below for the BBO Classic Complete. For more details, see the respective instructions for the other BBO packages.

- Insert the installation stick into the SEMPRA and press the **[USB]** button to open the USB menu.
- In the left-hand column of the USB menu, tap on the field **Installation**.

The following folders must be installed in the order specified by the numbering for a complete new installation of BBO CLASSIC COMPLETE or once as part of the upgrade to version 3.0 of BBO CLASSIC COMPLETE:

- ① **BBO-Basis 3.0**  
Contains the activation for the basic samples of the BBO packages
- ② **BBO-CI.Cpl.Basis 3.0**  
Contains the basic data of CLASSIC COMPLETE including the sound data for the Amadeus sound module(s).
- ③ **BBO ClComp. 3.0**  
Update of registrations, sound presets etc. to the SEMPRA 3.0 version of CLASSIC COMPLETE.

- Select the first folder to be installed, i.e. **BBO-Basis 3.0**, with the cursor and tap **Load/Install folder** on the right.
- The display asks whether the data should really be loaded.
- Confirm with **[Enter]**.
- If there are several AMADEUS sound modules in the organ, the display will now ask which sound module(s) the update should be installed on. The easiest way to do this is to select "**All sound groups**". The installation will then be carried out simultaneously on all existing AMADEUS modules.



- Alternatively, you can also select a specific module (SG1a, SG2a...). By selecting "**No sound group**", you can skip/cancel the installation of the data.
- The data is now loaded into all or the selected sound module.

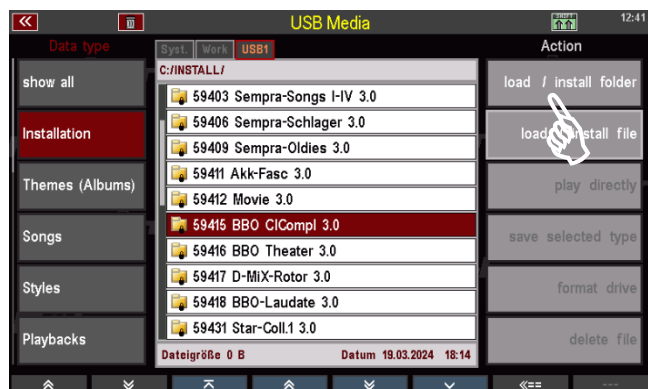
**Attention:** If you install the software again later, e.g. in a newly created user account, it is no longer necessary to reinstall the **BBO-Basis 3.0** folder, as this data is already on the AMADEUS sound module(s) after the initial installation.

- Now install the **BBO- Cl.Cpl.Basis 3.0** folder. During installation, you will also be asked in which sound module the sound data should be installed. Again, select "**All sound groups**" or the sound system in which you want to install the data. If you select "**No sound group**", you can skip the installation of the sound data. The other data (sound presets, SONG presets, button assignments) are then installed directly.



- **Note:** If certain data from a previous 2.0 installation is already available, you will receive a corresponding message from the display for each file to be installed. Confirm each of these messages with **[Enter]** to reinstall or cancel with **[ESC]** to continue using the existing data.

- Finally, load the **BBO ClComp. 3.0** folder to update the previously loaded data to the new version for SEMPRA 3.0.



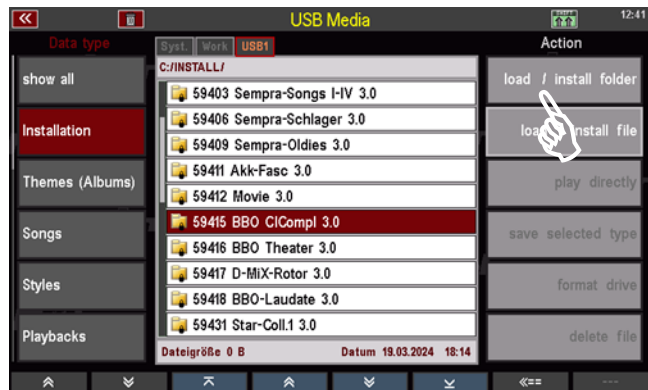
- The BBO - CLASSIC COMPLETE software is now fully installed and can be used.

## 2. Installation of only CLASSIC COMPLETE Update 3.0

This type of installation described here is now always sufficient if you create a new user account on your SEMPRA 3.0 that is to be used for CLASSIC COMPLETE.

In this case, the samples and sound data for the BBO packages are already available on the AMADEUS sound module(s) of your SEMPRA and do not need to be installed again.

- You only need to install the **BBO CComp. 3.0** folder from the factory stick. This will install the sound presets and SONG presets (registrations) of the new CLASSIC COMPLETE version for SEMPRA 3.0 in the instrument.

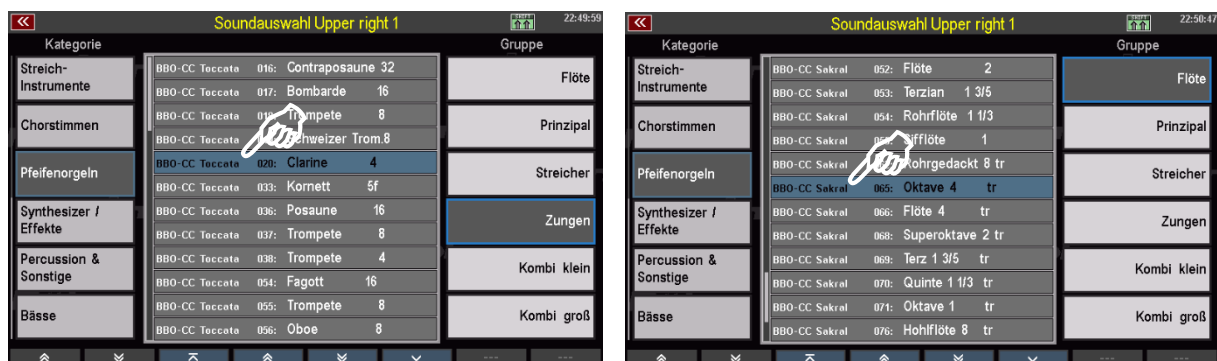


## Calling up CLASSIC COMPLETE stops and SONG presets

We assume that you are still in the sacral user account in which we have now installed BBO Classic Complete. If not, start the sacral user account on your SEMPRA 3.0 now.

### The stops

The CLASSIC COMPLETE **sounds** (i.e. the individual stops and combinations) can be found in the "**Pipe organ**" sound group in the sound slots of banks **20 BBO-CC Toccata** and **23 BB-CC Sacral**:

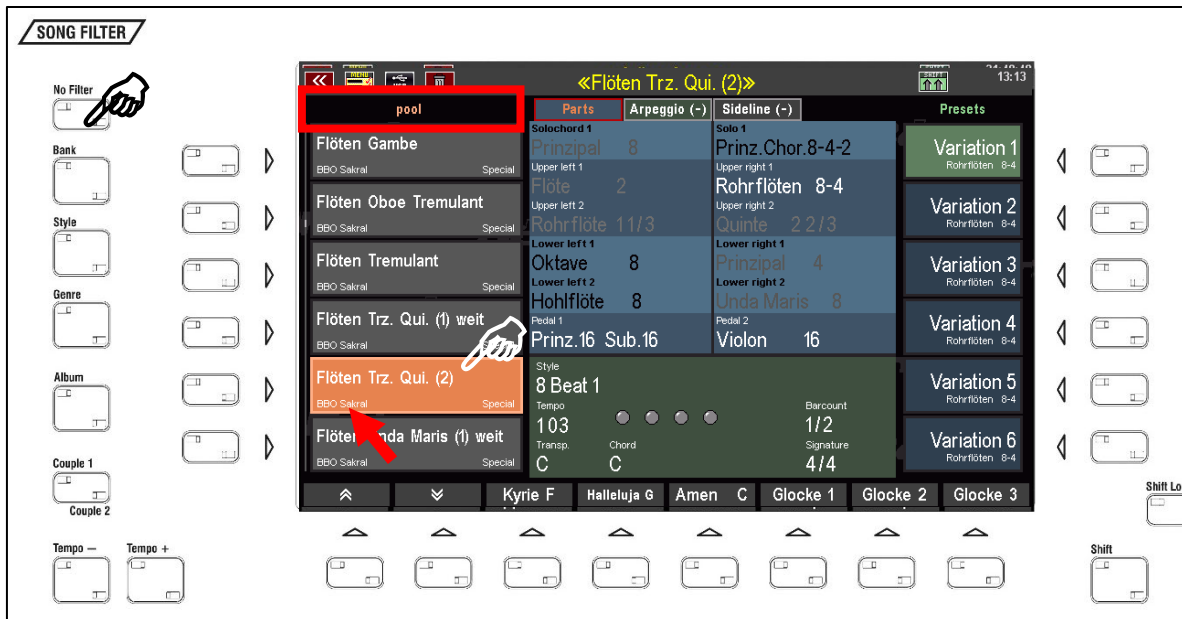


The registers are of course sensibly divided into subgroups such as flutes, principals, strings, reeds etc. and can be used as desired for your own sacred registrations/SONG presets.

## Registrations / SONGs and SONG-Presets

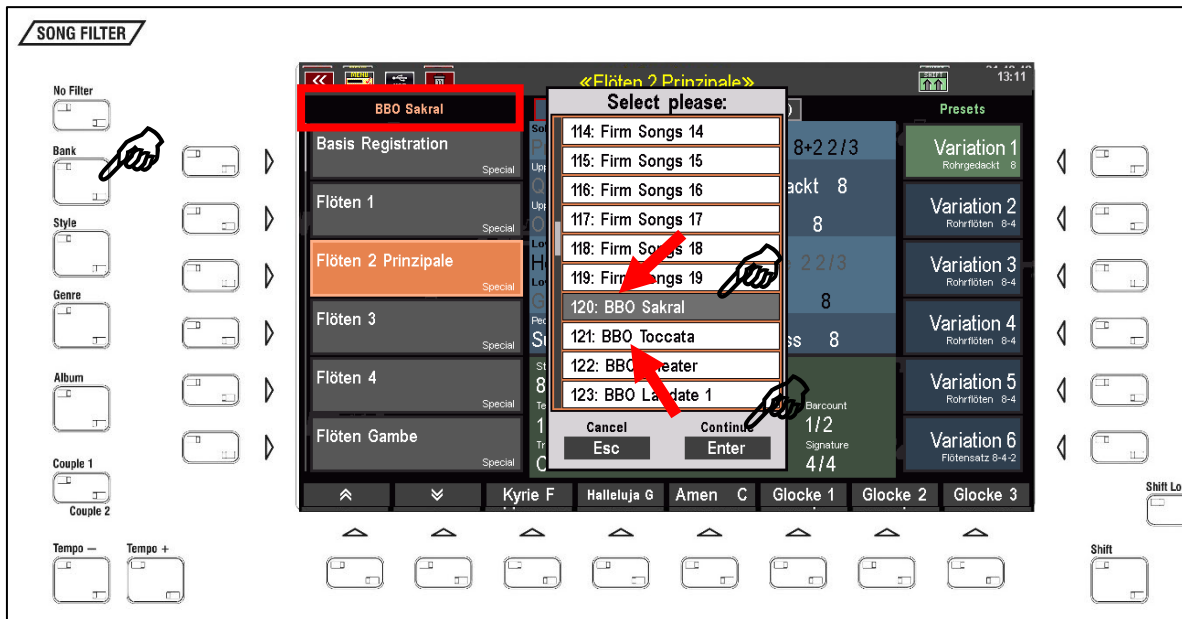
Depending on the SONG filter mode selected, you have various options for selecting the registrations or SONGs:

**SONG Filter „No Filter“ set:** You see the complete list of all SONGs in the active user account. Since we have created a separate account for the Sacred Organ game, you will find only the SONGs of the CLASSIC COMPLETE software here (and, if applicable, those of the BBO packages Laudate and, if applicable, Theater Organ, if these have also been installed in the Sacral Organ account).



The bank names are displayed in the SONG fields on the left. You can recognize the registrations of the CLASSIC COMPLETE software by the bank designations **BBO Sacral** and **BBO Toccata**.

**SONG Filter [Bank] set:** The CLASSIC COMPLETE registrations can be found on the SONG banks **120 BBO-CC Sacral** and **121 BBO-CC Toccata** (SONG Filter Press the **[Bank]** button twice to access the bank selection, confirm the selected bank with **[Enter]**):



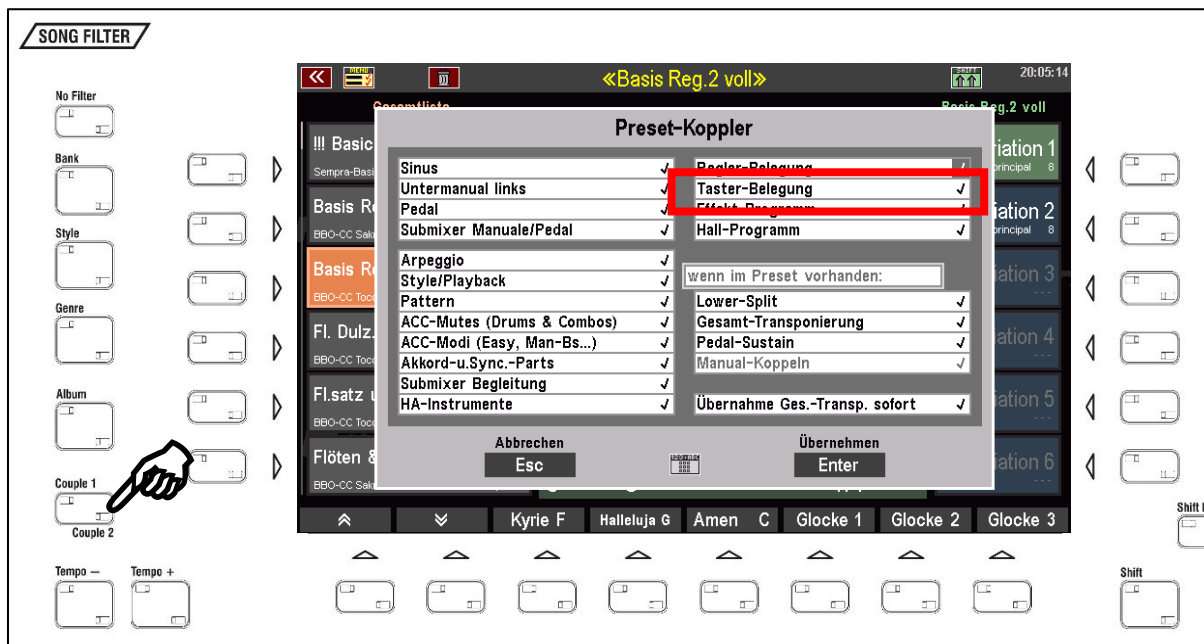
**SONG Filter [Genre] set:** The CLASSIC COMPLETE registrations can be found in the "Sound Basics" genre. Tap the **[Genre]** filter button twice to see the selection list of genres on the display. Select the "Sound Basics" genre and confirm with **[Enter]**.



## CLASSIC COMPLETE button preset

The SONG presets of the CLASSIC COMPLETE package use a special button preset (modified assignment of the F-buttons below the display, see page 7).

In order for this setting to be called up with the sacred SONG presets, the calling up of button assignments by the presets must be activated in the **PRESET COUPLER** settings:



You can of course also call up the button preset manually via the **BMC menu**, e.g. to use it in your own SONG presets:

- The button preset **F-56: Sakral 1** can be accessed via the menu **Buttons & slider settings (4) / Call up button preset (1)**:
- Confirm each time with **[Enter]** to accept the preset.



## Appendix

### Sound presets (single and combination stops)

#### Bank 20

1	Großprästant 32
2	Principalbass 16
3	Subbass 16
4	Stillbordun 16
5	Violonbass 16
6	Quintbass 10 2/3
7	Octavbass 8
8	Holzgedeckt 8
9	Violoncello 8
10	Quintged. 5 1/3
11	Choralbass 4
12	Hohlpfeife 4
13	Basset 2
14	Rauschquinte 2f
15	Pedalmixtur 5f
16	Contraposaune 32
17	Bombarde 16
18	Trompete 8
19	Schweizer Trom.8
20	Clarine 4
21	Prästant 16
22	Pommer 16
23	Principal 8
24	Hohlpfeife 8
25	Gambe 8
26	Unda Maris 8
27	Octav 4
28	Blockflöte 4
29	Spitzgambe 4
30	Quinte 2 2/3
31	Superoctav 2
32	Offenflöte 2
33	Kornett 5f
34	Mixtur 6f
35	Zimbel 4f
36	Posaune 16
37	Trompete 8
38	Trompete 4
39	Prästant 8
40	Rohrflöte 8
41	Salizional 8
42	Principal 4
43	Spitzflöte 4
44	Fugara 4
45	Quinte 2 2/3
46	Octav 2
47	Bauernpfeife 2
48	Quinte 1 1/3
49	Octav 1
50	Sesquialtera 2f
51	Terzian 2f
52	Mixtur 4f
53	Zimbel 4f
54	Fagott 16
55	Trompete 8
56	Oboe 8
57	Gedeckt 8
58	Gemshorn 8
59	Quintadena 8
60	Prästant 4
61	Rohrflöte 4
62	Quintadena 4
63	Nasat 2 2/3
64	Octav 2

#### Bank 23

1	Kontrabordun 32
2	Prinzpal 16
3	Subbass 16
4	Gedackt 16
5	Violon 16
6	Oktavbass 8
7	Gedackt 8
8	Choralbass 4
9	Flöte 4
10	Pedalmixtur 4-f.
11	Fagott 16
12	Trompete 8
13	Klarine 4
14	Pedal Plenum
15	Prinz.16 Sub.16
16	Prinz.16-8 Sb.16
17	Pr.Sb.16-8 Fl.4
18	Pr.16-8 Sb.Vio16
19	Pr.16-8 Sb.Fag16
20	Pr.16-8 Plen Fag
21	Gedackt 8 Fl. 4
22	Oktavb. 8 Ged. 8
23	Prinzpal II 16
24	Prinzpal 8
25	Rohrgedackt 8
26	Gamba 8
27	Unda Maris 8
28	Oktave 4
29	Flöte 4
30	Nasat 2 2/3
31	Superoktave 2
32	Terz 1 3/5
33	Quinte 1 1/3
34	Oktave 1
35	Kornett 3-fach
36	Scharff 4-fach
37	Mixtur 5-fach
38	Oboe 8
39	UndMar+Gemsh. 8
40	Prinzpal 16-8-4
41	Prinzpal 8-4-2
42	Prinz.8-4-2-Mixt
43	Prinz.16-8-Schar
44	Plenum
45	Gedackt 16
46	Oktave 8
47	Hohlflöte 8
48	Gemshorn 8
49	Prinzpal 4
50	Hohlflöte 4
51	Quinte 2 2/3
52	Flöte 2
53	Terzian 1 3/5
54	Rohrflöte 1 1/3
55	Sifflöte 1
56	Zimbel
57	Vox Coelestis 8
58	Vox Coel. Okt.2
59	VoxHumana 8
60	Salizional 8
61	Prinzpal 8 tr
62	Rohrgedackt 8 tr
63	Gamba 8 tr
64	Unda Maris 8 tr



**Bank 20**

65	Waldflöte	2
66	Terz	1 3/5
67	Larigot	1 1/3
68	Siffflöte	1
69	Hörnlein	2f
70	Scharff	4f
71	Dulzian	8
72	Krummhorn	8
73	Vox humana	8
74	Bourdon doux	16
75	Montre	8
76	Bourdon en bois	8
77	Flute harmoniq	8
78	Voix celeste	8
79	Eolienne	8
80	Prestant	4
81	Cor de nuit	4
82	Flute travers	4
83	Viole celeste	4
84	Douce	4
85	Nasard fl.	2 2/3
86	Doublette	2
87	Flute	2
88	Tierce	1 3/5
89	Harm.aetherea	4f
90	Fourniture	4st
91	Basson	16
92	Trompette	8
93	Hautbois	8
94	Clairon	4
95	Trompeta imp.	32
96	Trompeta mag.	16
97	Trompeta real	8
98	Clarin brillnt.	4
99	Clarin batalla	2
100	Orlos	8
101	Prästant tr.	8
102	Rohrflöte tr.	8
103	Salizional tr.	8
104	Principal tr.	4
105	Spitzflöte tr.	4
106	Fugara tr.	4
107	Quinte tr.	2 2/3
108	Quinte tr.	1 1/3
109	Sesquialt.tr.	2f
110	Terzian tr.	2f
111	Oboe tr.	8
112	Prin.4+oct.2 tr.	
113	Spfl.4+oct.2 tr.	
114	Spfl.4+bpf.2 tr.	
115	Wind 1 l/r	
116	Wind 1 r/l	
117	Wind 2 l/r	
118	Wind 2 r/l	
119		
120		
121		
122		
123		
124		
125		
126		
127		
128		

**Bank 23**

65	Oktave	4 tr
66	Flöte	4 tr
67	Nasat	2 2/3 tr
68	Superoktave	2 tr
69	Terz	1 3/5 tr
70	Quinte	1 1/3 tr
71	Oktave	1 tr
72	Oboe	8 tr
73	UndMar+Gemsh.	tr
74	Salizional	8 tr
75	Ged. Oboe	8 tr
76	Hohlflöte	8 tr
77	Gemshorn	8 tr
78	Quinte	2 2/3 tr
79	Flöte	2 tr
80	Siffflöte	1 tr
81	Hohlfl8 Pr.	8-4-2
82	Rohrge.8 Siff.	1
83	Hohlfl.8 Rfl.	113
84	Ho.FL8 FL2 FL113	
85	Rohrflöten	8-4
86	Flötensatz	8-4-2
87	R.fl.8 S.fl.1 tr	
88	Ged. 8+2 2/3 tr	
89	Gedackt 8+2 2/3	
90	Prinz. 8 Oktav	4
91	Pr.8 Okt.4 S.okt	
92	Pr.8 Oktav	4-2-1
93	Gedackt 8Gambe	8
94	Ged. 8-4 Gambe	8
95	G.8-2 2/3Gambe	8
96	Ged. 8-4-2 Gam.	8
97	Gedackt Undam.	8
98	Ged.8 Unda.8 Nas	
99	Ged.Unda.Nas.Obo	
100	Pri. 8-4-2 1 1/3	
101	Pr.16-8-4 NasTrz	
102	Plenum	1
103	Plenum 2 Oboe	8
104	Pr. 8-4-2 Korn.3	
105	Sesquialtera	
106	Sesquia. Oktav	1
107	Sesquialtera tr	
108	Pr. 16-8-4 Mixt5	
109	Prinz.Chor.8-4-2	
110	Zungenchor	
111	Zungenchor	2
112	Zungenchor	2 Mxt
113	S.okt 2 Oktave	1
114	S.okt 2-1 + Terz	
115	Prinzipal	16 Hb
116	Subbass	16 Hb
117	Oktavbass	8' Hb
118	Pr.16-8 Sb.Fl.Hb	
119	Pr.16-8Sb.Vio Hb	
120	Kornett	2
121	Korn. de la comp	
122	Korn. de la c.tr	
123	Rohrflöte	2 2/3
124	Flötensatz	2-1
125	Flötens. 2-1 1/3	
126	Flötenmixture	3f.
127	Flötenmixture	4f.
128	Prinz.mixture	4f.

*tr.* = mit Tremulant

## SONGS (registrations) „CLASSIC COMPLETE“

### SONG Bank 120 BBO Sacral

120|001|Basis Registration  
 120|002|Flöten 1  
 120|003|Flöten 2 Prinzipale  
 120|004|Flöten 3  
 120|005|Flöten 4  
 120|006|Flöten Unda Maris (1) weit  
 120|007|Flöten offen (1)  
 120|008|Flöten offen (2) weit  
 120|009|Flöten Gambe  
 120|010|Flöten VoxCoel. (1)  
 120|011|Flöten Trz. Qui. (1) weit  
 120|012|Flöten Trz. Qui. (2)  
 120|013|Flöten Unda Maris (2)  
 120|014|Flöten VoxCoel. (2) weit  
 120|015|Prinz. VoxCoe. Kornett  
 120|016|Salizional VoxCoelestis  
 120|017|Ged. Vox. Ob. Mixtur  
 120|018|Pri. Vox. ZR Mixturen  
 120|019|Pri. VoxCoel. Kornett  
 120|020|Pri. VoxCoel. Mixt. weit  
 120|021|Flöten Tremulant  
 120|022|Flöten off. (1) Tremulant  
 120|023|Flöten off. (2) Tremulant weit  
 120|024|Prinz. Flöten Tremulant  
 120|025|Flöten Oboe Tremulant  
 120|026|Prinz. 8-4 Flöten (1)  
 120|027|Prinz. 8-4 Flöten (2) weit  
 120|028|Prinz. 8-4-2 Flöten  
 120|029|Prinz. 8-4-2 Korn. Mixtur  
 120|030|Prinz. 8-4 Scharff  
 120|031|Prinz. 8-4 Sch.-Mix. ZR  
 120|032|Prinz. 8-4-2-1 Mixtur  
 120|033|Prinz. 8-4-2 Mixt. ZR (1)  
 120|034|Prinz. 8-4-2 Mixt. ZR (2)  
 120|035|Pr. Fl. 8-4-2 Mixturen  
 120|036|Prinz. Fl. 3 Mixturen weit  
 120|037|Volles Werk  
 .  
 .  
 .  
 120|059|H Flöten 1 Lm Handbass  
 120|060|H Flöten 2 Lm Handbass weit  
 120|061|H Flöten Trem. Lm Handb.  
 120|062|H Flöten of. Tr. Handb. weit  
 120|063|H Prinz. 8-4-2 Fl. Handb.  
 120|064|H Prinz. 8-4-2 Mix. Handb.

### SONG Bank 121 BBO Toccata

121|001|T Basis Reg. 2 voll  
 121|002|T Flöten 1  
 121|003|T Flöten 2 offen  
 121|004|T Flöten 3 voll  
 121|005|T Passion 1  
 121|006|T Passion 2 weit  
 121|007|T Gedeckt  
 121|008|T Gedeckt & Unda maris  
 121|009|T Gedeckt Gambe Prinz.  
 121|010|T Passion 3  
 121|011|T Hohlpf. Quint Okt. Terz  
 121|012|T Flötensatz Larigot  
 121|013|T Fl.-Satz Undam. Gemsh. weit  
 121|014|T Flöten Voix celeste  
 121|015|T Prinz. Vox hum. Kornett  
 121|016|T Salizional Hoernlein 2f  
 121|017|T Fl. Dulzian Oboe Mixtur  
 121|018|T Prinz. Zungen Mixtur  
 121|019|T Prinzip. Kornett Flt. ha.  
 121|020|T Pri. Vox hum. Mixtur 6f.  
 121|021|T Flöten Tremulant weit  
 121|022|T Flöten Tremulant  
 121|023|T Flöten Oboe Tremulant  
 121|024|T Präst. Flöten Tremulant  
 121|025|T Prinzipal Basis  
 121|026|T Prinz. Tromp. Mixtur  
 121|027|T Prinz. 8-4 Flöten  
 121|028|T Prinz. 8-4-2 Flt. Mixtur  
 121|029|T Prinz. Dulzian Kornett  
 121|030|T Prinz. Mixt. Trompete  
 121|031|T Prinz. Unda. Ob. Mixtur  
 121|032|T Prinz. Sesq. Mixtur  
 121|033|T Prinz. Mixturen Oboe  
 121|034|T Prinz. Tromp.4 Zimbel  
 121|035|T Prinz. Fl.-Satz Mixturen  
 121|036|T Prinz. Flöten Mixturen  
 121|037|T Volles Werk  
 121|038|Dir. Flöten 1  
 121|039|Dir. Flöten 2 offen  
 121|040|Dir. Flöten 3 voll  
 121|041|Dir. Gedeckt & Unda maris  
 121|042|Dir. Gedackt Gambe Prinz.  
 121|043|Dir. Hohlpf. Qui. Okt. Terz  
 121|044|Dir. Flötensatz Larigot  
 121|045|Dir. Fl.-Satz Unda. Gemsh.  
 121|046|Dir. Flöten Voix celeste  
 121|047|Dir. Prinz. Vox hum. Korn.  
 121|048|Dir. Salizional Hoernl. 2f.  
 121|049|Dir. Fl. Dulzian Oboe Mixt  
 121|050|Dir. Prinz. Zungen Mixtur  
 121|051|Dir. Prinzip. Korn. Flt. ha.  
 121|052|Dir. Pri. Vox hum. Mix 6f.  
 121|053|Dir. Flöten Tremulant

121|054|Dir. Flöten Oboe Tremulant  
121|055|Dir. Prinzipal Basis  
121|056|Dir. Prinz. Tromp. Mixtur  
121|057|Dir. Prinz. 8-4 Flöten  
121|058|Dir. Prinz. Unda. Ob. Mixt.  
121|059|Dir. Prinz. Sesq. Mixtur  
121|060|Dir. Prinz. Mixt. Oboe  
121|061|Dir. Prinz. Tromp.4 Zimbel  
121|062|Dir. Prinz. Fl.-Satz Mixt.  
121|063|Dir. Prinz. Flöten Mixturen  
121|064|Dir. Volles Werk



Keyswerk Musikelektronik GmbH

Sülbecker Str. 20-22

31688 Nienstädt

Germany

Tel.: 05722 905088

**Internet** <http://www.bohm-orgen.de>

**E-Mail** [info@kboehm-orgeln.de](mailto:info@kboehm-orgeln.de)