

Böhm
ORGELN | KEYBOARDS

SEMPRA 3.0 *PRO-LIB*

Installation and Playing instructions



www.boehm-organs.com

Star Collection 2 – Style pack for SEMPRA 3.0 Pro-Lib – Installation and playing instructions

Version 1.00, 14.10.2024

Art.-Nr. 42632AE

The information contained in this documentation may be changed without announcement and are subject to change without notice by Keyswerk Musikelektronik GmbH & Co. KG does not represent an obligation.

The description contains the current state of information at the time of going to press.

Changes of technical details compared to the descriptions, the information and illustrations in this manual are subject to change without notice.

Keyswerk Musikelektronik GmbH assumes no liability for program errors and for incorrect information in the documentation and its consequences.

© Keyswerk 2024

All rights reserved

Responsible for the content of this website

KEYSWERK Music Electronics GmbH

Sülbecker Str. 20-22

31688 Nienstädt

Germany

Phone: 05722 - 905088

Fax: 05722 - 287555

Internet <http://www.keyswerk.de>

E-mail info@keyswerk.de

Content

| | |
|--|---|
| General | 4 |
| Installation..... | 4 |
| How to find the data?..... | 6 |
| Arpeggios in Star Collection registrations | 8 |
| GST Plus in Star Collection styles..... | 8 |
| Overview Star Collection 2 for SEMPRA 3.0 Pro-Lib..... | 9 |

General

We are glad that you extend your SEMPRA 3.0 with the **Star Collection** software. Our artists have put together a lot of material. The **Star Collection 1** and **2** packages each contain 32 styles, which now also use the fantastic **Guitar Strumming Plus** technology (GST+) and the fantastic sounds and drum kits of the **Pro-Lib** sound library.

For each Style there is a SONG with 4 Style-Basic registrations (One-Touch Presets), and in many of these presets there are already **arpeggios for the SEMPRA Arpeggiator** stored.

These styles are generally very universal. Some of the Intro and Ending patterns for variations 3 and 4 are based on popular tunes. Some styles have special features. For example, it can happen that in variation 1 no bass is played in order to have a longer intro, or in other styles a variation is used as a so-called "bridge" (comparable to the middle section or trio in a song). Such a "bridge" seems to take an inappropriate special position within the 4 variations at the first moment. But if you play a suitable title you are happy to have a suitable accompaniment for this special passage.

In the "Disco Fox"-style "Howard Medley" only the fourth variation is a triplet rhythm. If you now play a Howard Carpendale medley, you can use the fourth variation for "Hello again".

Surely you will notice when listening to the styles how much detail work has gone into the instrumentation of the intros and endings to variations 3 and 4. Your SEMPRA 3.0 can use separate playing parameters for intros and endings. This is especially interesting for highlighting certain leading elements of the arrangements only in the intro or ending. Often this has been applied in the form of timbre change, dynamic gradation, change of range, reverb content, etc.

Installation

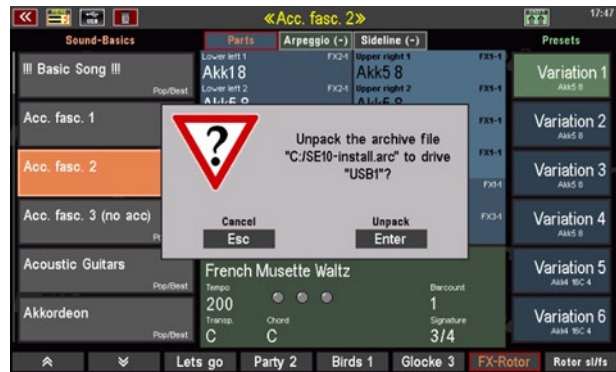
The **Star Collection 2** styles and SONG registrations are installed from the USB stick belonging to your SEMPRA with the factory data into the instrument.

The installation is carried out in the same way as described below, regardless of whether you install the **Star Collection 2** as a full version or as an update of the previous Star Collection 2 GST. The installation data is identical for both versions. If an earlier Star Collection 2 version is already installed, this is updated by the new installation of the GST version.

Attention: *If you have received the package as an "arc" file (archive file) by email, please first copy this file on the PC into the top directory of your factory data stick (or another USB stick, which must however be formatted on your SEMPRA).*

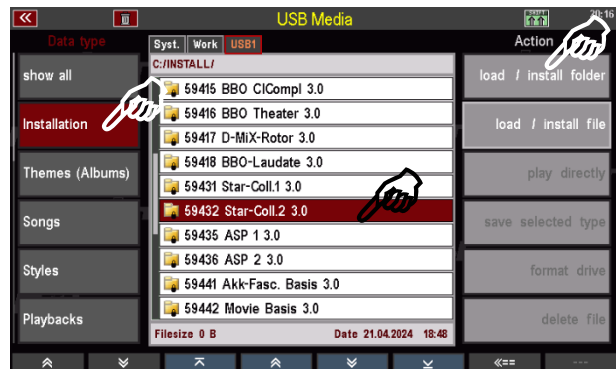
When you insert the stick into the SEMPRA, the system recognizes the archive file and asks you whether the archive should be unpacked.

Confirm with **ENTER**. The installation folder for the "Star Collection 2" package is now created on the stick (we recommend that you delete the arc file from the stick again after installation, otherwise you will always be asked whether the file should be unpacked when you insert the stick in the future).

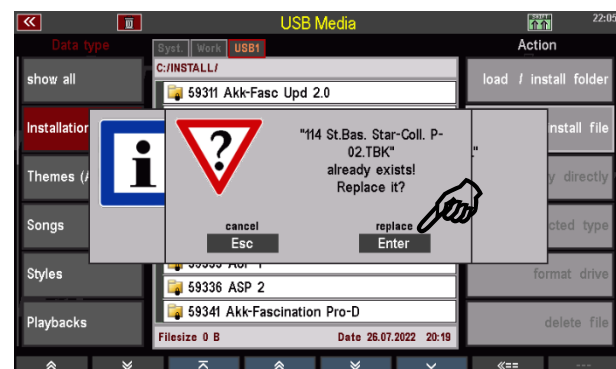


You can now proceed with the actual installation on the SEMPRA:

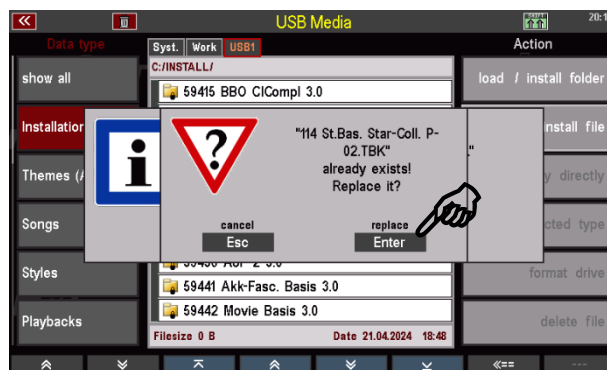
- Insert the USB stick with the installation data into one of the USB sockets of your SEMPRA.
- Press the **[USB]** button to open the USB menu in the display.
- Tap the **Installation** data type on the left (the field is displayed in red).
- Place the cursor on the "59432 Star Collection II" folder using the data wheel or the up/down cursor keys (but do not open the folder!).
- Tap the "Load/Install folder" field on the right side.



- The display asks whether you really want to install the data. Confirm with **[Enter]**.
- The styles are now loaded. You can then exit the USB menu again (press the **[ESC]** or **[USB]** button).



- If you install the **Star Collection 2 3.0** as an update over an already existing Star Collection 2 GST, the display will inform you that some files are already available. Confirm these queries with **[Enter]** in each case. The new data will then be loaded and replace the previous versions.
- You can then exit the USB menu (press the **[ESC]** button or the **[USB]** button).

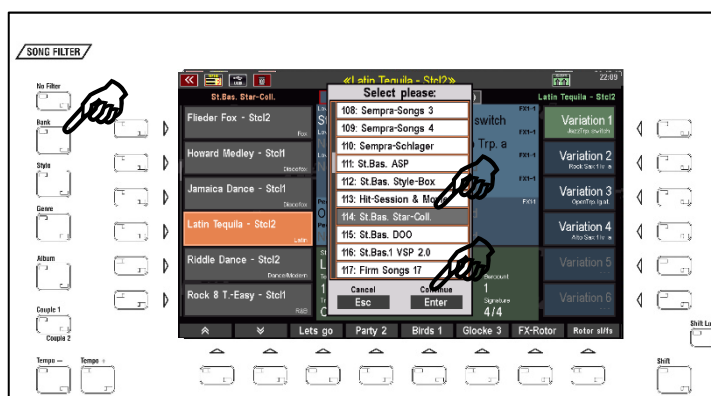


Attention: Please note that factory data, including the Star Collection packages, are always installed on an **account-specific** basis. If you use additional user accounts on your SEMPRA and the Star Collection styles are also to be used in these accounts, you may have to perform the installation again for these additional accounts!

How to find the data?

The "**Star Collection**" SONGS with the example presets can be found in the Firm SONG Bank 14 "**St.Bas. Star-Coll.**". Call up this bank e.g. via the **SONG filter** button **[Bank]** (press 2x, if not already selected) and then scroll to the corresponding bank position.

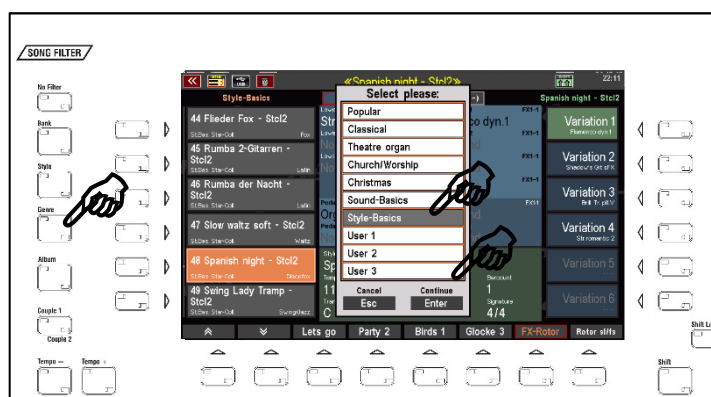
Confirm with **[Enter]**. The SONG list on the left of the display now shows the **Star Collection** SONGS.



Alternatively, you can call the **STYLE BASICS** genre for the SONG list. All **Star Collection** SONGS are assigned to this genre.

Press the SONG filter button **[Genre]** (press 2x if necessary, if not already selected) and select the genre "**Style Basics**" from the list.

Confirm with **[Enter]**.

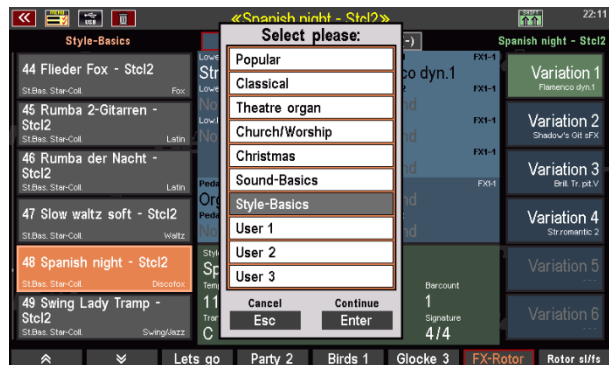


The SONG list on the left now shows the SONGS of the genre "Style Basics", here among others the **Star Collection** SONGS.

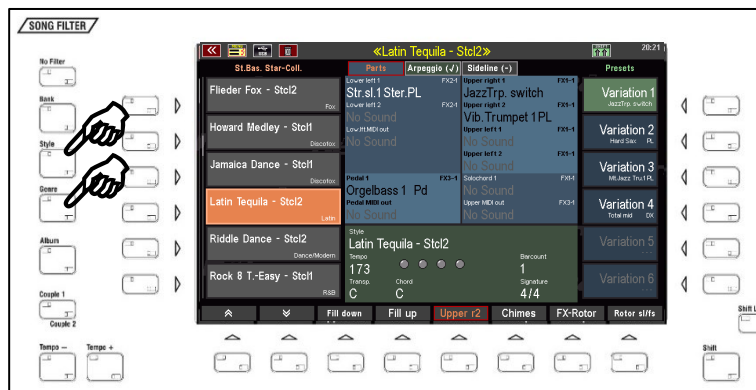
SONGS of the Star Collection packages can be recognized by the abbreviation **Stcl1** or **Stcl2** in the SONG name.

You can find the **Star Collection** SONGs also with activated genre "**Style Basics**" and together activated SONG filter buttons [**STYLE**] + [**GENRE**]:

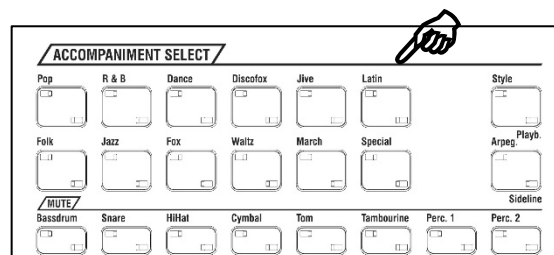
- First, tap the SONG filter button [**Genre**] twice. The list for selecting the SONG genres appears in the display.



- Select the Style Basics genre here and confirm with [**Enter**].
- Now switch on the two SONG filter buttons [**Style**] and [**Genre**] in combination (the LEDs in both buttons light up).



- The SONGs now appear in the SONG lists of the corresponding accompaniment categories, which you can select via the 12 category buttons in the **ACCOMPANIMENT SELECT** group.



The **Star Collection** styles occupy the firm style bank 14 (Star Collection). They are assigned to the corresponding categories and subgroups in the Style selection.

Styles of the **Star Collection 1** and **Star Collection 2** packages can be recognized by the abbreviation "**Stcl1**" or "**Stcl2**" behind the style name.



Arpeggios in Star Collection registrations

Many SONG presets of the new Star Collection GST now also contain arpeggios from the pool of the factory arpeggio banks 1...3. Attention: These arpeggios will only sound if the app **SEMPRA Arpeggiator** (Art.-No. 41162) is installed on the SEMPRA.

Registrations with a stored arpeggio can be recognized by a check mark at the top of the Arpeggio field of the basic screen after being called up:

Attention. The arpeggios are not always active immediately with the preset call. But they can be switched on at any time and then play along.



GST Plus in Star Collection styles

The Star Collection styles now also use the Böhm **GST** guitar technique with authentic guitar strummings and runs.

You can recognize the GST tracks in the Style Editor by the **Chord** parameter, under which the respective fingering or playing technique used is listed.



In addition, the new **GST Plus** guitar fingerings have also been used in many styles of the Star Collection. Here, the "guitarists" of the accompaniment also play chords in which only the lower or only the higher strings of the guitar are strummed.

Overview Star Collection 2 for SEMPRA 3.0 Pro-Lib

Styles in Firm Style bank 14 “Star Collection”

SONGS in Firm SONG bank 14 “St.Bas. Star-Coll.”

| Bank | Number | Name |
|------|--------|----------------------------|
| 114 | 001 | 8-Beatrock Party - Stcl1 |
| 114 | 002 | 8-Beat light - Stcl1 |
| 114 | 003 | Blues - Stcl1 |
| 114 | 004 | Boney M. Medley - Stcl1 |
| 114 | 005 | Dance Trouper - Stcl1 |
| 114 | 006 | Disco YMCA - Stcl1 |
| 114 | 007 | Howard Medley - Stcl1 |
| 114 | 008 | Jamaica Dance - Stcl1 |
| 114 | 009 | Soft US 16 Beat - Stcl1 |
| 114 | 010 | Some broken - Stcl1 |
| 114 | 011 | Sommernacht Beat - Stcl1 |
| 114 | 012 | Sonne in der Nacht - Stcl1 |
| 114 | 013 | Swinging Twist - Stcl1 |
| 114 | 014 | Uni. 16 Disco - Stcl1 |
| 114 | 015 | Waltz half tempo - Stcl1 |
| 114 | 016 | Wind soft 8-Beat - Stcl1 |
| 114 | 017 | Rock 8 T.-Easy - Stcl1 |
| 114 | 018 | Rock you b. - Stcl1 |
| 114 | 019 | Rocking Beat - Stcl1 |
| 114 | 020 | Rosegard. C.-Beat - Stcl1 |
| 114 | 021 | Rote L. Shuffle - Stcl1 |
| 114 | 022 | Route 66 Swing - Stcl1 |
| 114 | 023 | Sarahs Softbeat - Stcl1 |
| 114 | 024 | Fast Pop-Beguine - Stcl1 |
| 114 | 025 | Sehnsuchts Walzer - Stcl1 |
| 114 | 026 | Sempre Italy - Stcl1 |
| 114 | 027 | Sentimental Swing - Stcl1 |
| 114 | 028 | Sexbomb Disco - Stcl1 |
| 114 | 029 | Slow 6-8 Motion - Stcl1 |
| 114 | 030 | Slow Swing - Stcl1 |
| 114 | 031 | Smooth Oper.-Beat - Stcl1 |
| 114 | 032 | So whats - Stcl1 |



BÖHM Organs

KEYSWERK Musikelektronik GmbH

Sülbecker Str. 20-22

31688 Nienstädt

Germany

Tel.: +49 (0) 5722 905088

Internet www.boehm-organs.com

E-Mail info@boehm-organs.com