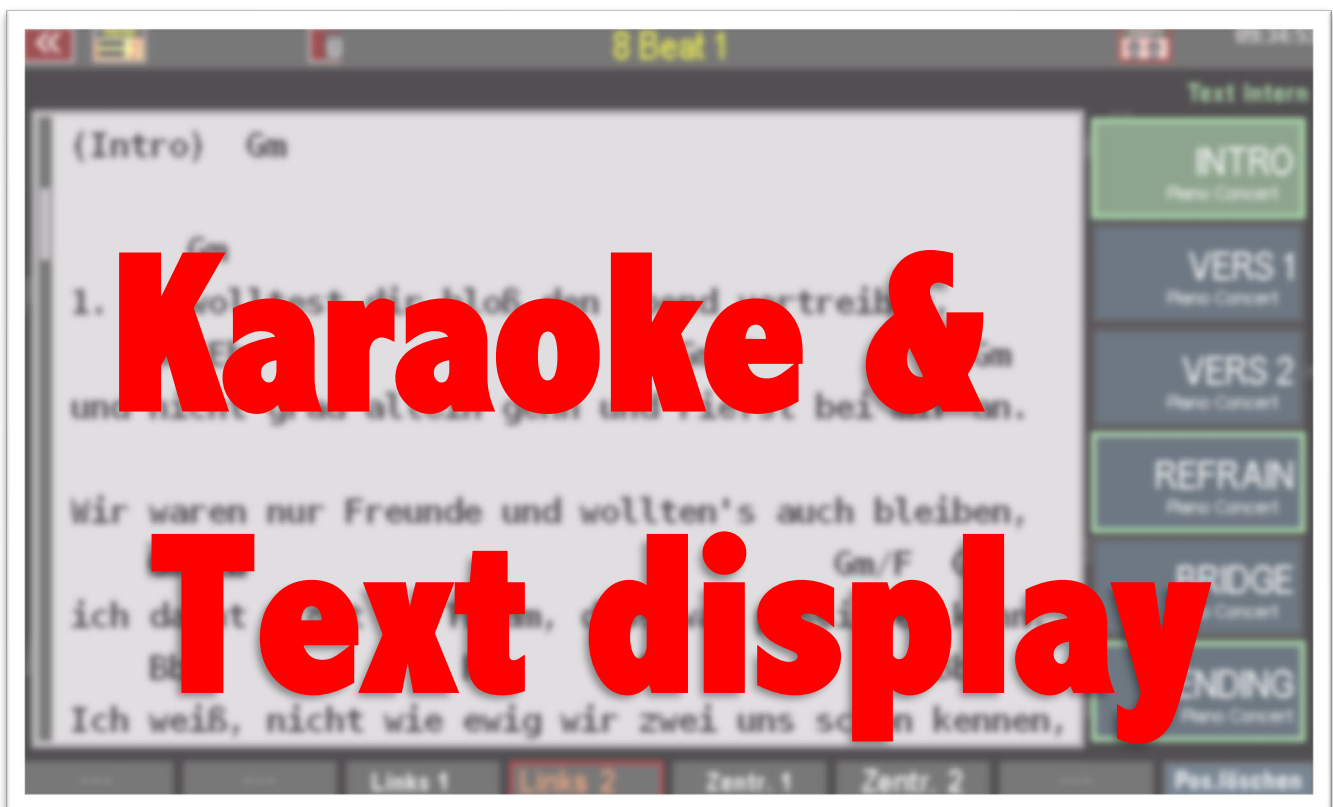


SEMPRA 2.0

Installation and playing instructions



„Karaoke & text display“ app for SEMPRA - Installation and playing instructions

Version 2.0, 15.07.2023

Art.-No. 62259AE

The information contained in this documentation is subject to change without without prior notice and does not represent any obligation on the part of Keyswerk Musikelektronik GmbH.

The description is based on the information available at the time of printing.
at the time of printing.

Changes of technical details compared to the descriptions and illustrations in this manual are reserved. Keyswerk Musikelektronik GmbH cannot be held responsible for program errors and for incorrect information in the documentation and its consequences. and their consequences.

© Keyswerk 2021
All rights reserved

Responsible for the content
KEYSWERK Musikelektronik GmbH
Warbersche Str. 32
31675 Bückeburg
Germany
Tel.: 05722 - 905088
Web: www.boehm-orgeln.de
E-Mail info@boehm-orgeln.de

Content

App code activation.....	4
The different ways of displaying text	4
1. Lyrics displayed on an external device and selected via MIDI from the SEMPRA.....	4
2. Lyrics displayed on the SEMPRA display	5
3. display of the lyrics from a running playback synchronously to the music.....	5
Display lyrics from MIDI files (karaoke).....	6
Karaoke GM.....	6
Solton1 und 2	7
MidiSoft	7
.KAR	7
Usage and SONG storage	7
Song lyrics without MIDI file/playback playback.....	8
Link text positions with SONG presets	9
Individualization of the text display	9
Miscellaneous.....	10

App code activation

In order to be able to use the functions of the extension, it must first be activated by entering an activation code (app code). You know this procedure from other function extensions for your SEMPRA. You will receive the code either on a USB stick, by email, or on the invoice for this extension. Please enter the code in the menu System Settings - Unlocks in the line "Karaoke, Song Lyrics". Further explanations about the unlocking procedure can be found in the SEMPRA main user manual.

The different ways of displaying text

The **Karaoke/Lyrics Display** app includes two new features for your SEMPRA at once:

- The display of lyrics, coupled to your SONGs / SONG Presets
- The display of lyrics from a running playback (karaoke midifiles).

Both functions require some explanations beforehand. But the preparation and the later operation are again as usual logical and simple.

We distinguish between three possibilities for the lyrics display:

1. Lyrics displayed on an external device and selected via MIDI from the SEMPRA

This possibility is already available in every SEMPRA. The text source is an **external** device connected via MIDI (e.g. a PC with a note display program like Atmobyte, MobileSheets, etc.).

Such programs usually use MIDI **bank** and **program** commands to select the individual text or also note files.

The required text number can be stored in the SONG settings as a combination of the MIDI commands **Bank MSB**, **Bank LSB** and **Program Change Number**, so that the appropriate text can be called up and displayed (on the external device) for each SONG. The values to be entered in each case can be taken from the note program used.

In this case, MIDI must be set in the **Lyric Source** field and a MIDI connection (MIDI Out of the SEMPRA to MIDI In of the external text display device) must exist.

The data is transmitted on all MIDI output ports of the SEMPRA on MIDI channel **16**. Set your note display program/device to this receive channel.



The channel number can also be set individually in **[Menu] - Parts & MIDI (7) - MIDI (6)** for each of the available MIDI ports on the display page "Global".

To do this, select the MIDI port to which the display device is connected in the MIDI menu on the left and then set the desired MIDI channel number 1...16 under MIDI Out in the line **Channel Lyrics**.



If you enter "--", there will be no transmission of MIDI parameters for text control.

2. Lyrics displayed on the SEMPRA display

Texts (.txt files) can be imported from the USB stick into SEMPRA and permanently assigned to the SONGs. In doing so, the texts are saved together with the SONG in the SEMPRA. The text source therefore is **Intern**.

The input of a text number is not necessary here, because there is a fixed assignment of the text to the respective SONG. More details about the assignment will be explained later.



3. Display of the lyrics from a running playback (midfile) synchronously to the music

Many MIDI files already contain text data, which can then be shown on the SEMPRA display synchronously to the running of the file (karaoke function). The 5 most common karaoke formats of the MIDI file manufacturers are supported. When a MIDI file is installed as playback, it is analyzed and the contained format is preset.

If the karaoke text of the playback is to be displayed, the text source in SONG Karaoke auto must be selected.



If a MIDI file contains more than one format, you can also set a format other than the automatically selected one. If no karaoke text is available, no format can be selected.

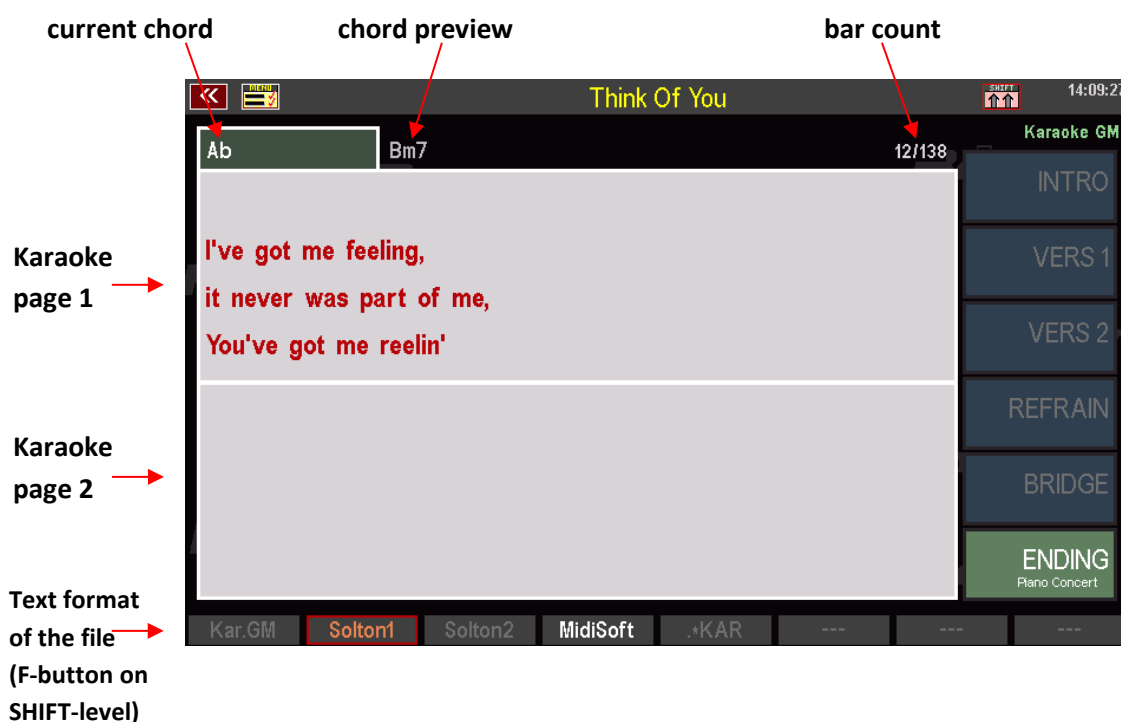
For each SONG you can set one of the three text sources mentioned above.

Display lyrics from MIDI files (karaoke)

But first let's start with the simplest variant, namely the direct playback of a MIDI file with karaoke lyrics:

- So select from your USB stick a MIDI file that you know (or assume) contains karaoke lyrics, and select **direct play** in the USB menu on the right.
- The MIDI file is analyzed and a suitable karaoke format is set. If a format is detected, the LED in the **[Lyric]** button on the control panel lights up (button **[Option 6]** on 480/500/600SE).
- Now you can call up the Lyric menu. Either directly via the button **[Lyric]** or via the menu - **Rhythm & Accompaniment - Karaoke, Lyrics (€)**.

Here is the lyric menu in overview:



Depending on the included karaoke format and also depending on how elaborately the MIDI file was programmed, the display is more or less detailed! Only what is contained in the MIDI file can be displayed.

SEMPRA supports the following formats:

Karaoke GM

At best, the syllables currently to be sung are displayed here. Depending on the programming effort, however, the display of entire lines is also possible here. Also the chords to be grasped in each case can be present.

The SEMPRA shows here independently a preview of the next text page and the next following chord!

Solton1 und 2

Whole lines are always displayed here for preview! An additional controller is then used to mark the syllables. Since in the test MIDI files available to us with this format this controller was never contained, the format Solton1 was defined, which shows the lines as active.

Should the controller for syllable marking be found, the format Solton2 is activated, which then displays the lines as preview and marks the syllables at the active singing time.

Both formats can contain chords, SEMPRA does the chord preview.

MidiSoft

In this format, 4 lines are displayed at once as a preview and one whole line is highlighted at singing time. Chords can be included. But there is no chord preview here.

.KAR

Here, at best, there are again single syllables that are displayed at the singing time. SEMPRA again generates the preview here. Chords are not included in this format.

Usage and SONG storage

In the screen shown above, the **[SHIFT]** button is pressed so that the formats contained in the MIDI file are displayed and can also be selected via the **[F]** buttons. During the playback of the MIDI file it is possible to switch between the formats. Afterwards, however, it takes a moment until the new format synchronizes the display again!

Also the lyric menu can be left at any time. The text display continues to run in the background, so that the menu can be called up again at any time.

If you have saved the MIDI file internally as a playback, you can save it in a SONG. To do this, in the SONG settings, in addition to the assignment of the corresponding playback, also set the text source according to the desired text format (see above).

The SONG presets (global presets) can also be called up in the Lyric menu via the preset fields on the right of the display or the right display buttons.

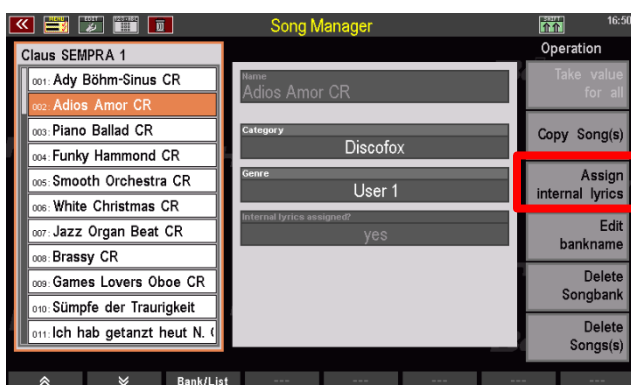
If you have also set pattern start points in the playback (**ACC orchestration** menu), you can, as you know, jump directly to these points in the playback using the style buttons or the SONG presets. Here, too, the karaoke text is synchronized again after a few notes, i.e. it jumps to the start position of the selected pattern point!

Song lyrics without MIDI file/playback playback

Alternatively, to the karaoke text, or if you play live and without playback (e.g. also with a style), an own song text can be loaded to each SONG. The assignment of this text to the respective SONG is done in the song management (**Menu - Presets, Songs and Albums - Song management**).

The text must be available in the form of a standard (ASCII) text file (.txt) on a USB stick. Often such song texts are offered by MIDI file manufacturers or are also freely available on the Internet.

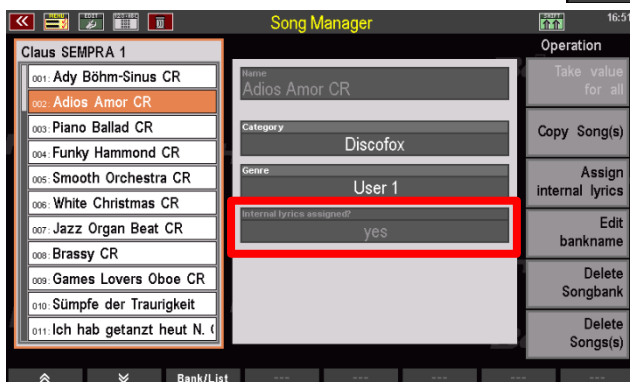
In the following we assume that a USB stick with song lyrics is inserted into the SEMPRA and the menu **Song management** is called up:



Select the SONG for which you want to load a text and tap on „Assign internal lyrics“

← The display now changes to the USB directory:

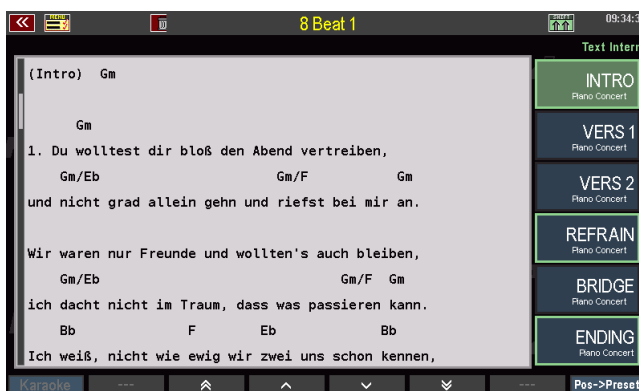
Select the text file you want to install and tap "Load / install file"



The properties of the song now show that an internal text is assigned.

If a song with an assigned lyric is called up, the LED in the "Lyrics" button lights up. When the Lyric menu is called up, this is displayed:

You can scroll through the text line by line or page by page using the **cursor** buttons, the **[F]** buttons under the display or the scroll function on the foot switches.



Link text positions with SONG presets

Even more comfortable is the jumping to the correct text position when calling a SONG preset! For each SONG preset you can define its own position in the text, which is jumped to when this preset is called up!

In the picture above the preset INTRO is selected. A green frame indicates those presets that are already linked to a text position.

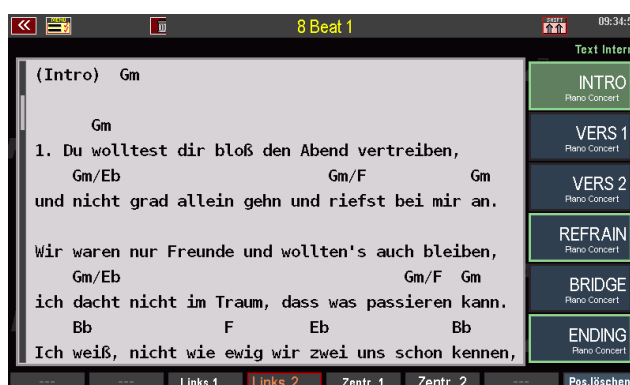
- To assign a text position to a preset, scroll the display to the corresponding text position and press the **[F]**-button **Pos->Preset**.
- Now the frames around the presets not yet linked to text positions will blink. Select a preset to be linked to the current text position.
- You can also select a preset that is already linked to update the text position for that preset.

With **[SHIFT] + [F]**-button **Delete position** and then tapping the preset, a link can also be cancelled again.

Individualization of the text display

With the **[SHIFT]** button held down, you can select 2 different font sizes each for left-justified or centered alignment, depending on the text template and your taste.

For text templates with chords above the text, one of the two left-justified displays should be selected so that the chords are also above the correct syllables. The selected format and the text positions are automatically saved in the song.



Miscellaneous

The texts assigned to the SONGs are stored together with the songs on USB and loaded again from there. No further settings are required for this.

Copy songs with internal texts

If you want to move SONGs containing lyrics to another place, please perform this move in the **Presets, Songs & Albums (1) - Song Management (6)** menu using the copy function there.

In these cases, the SONGs retain the assigned lyrics and these are also available at the new SONG position via the **[Lyric]** button.



When copying/moving a song to another place via the SONG settings (F-button function **SHIFT - edit song** in the basic screen) the assigned lyrics are NOT copied as well!

Texts must be reassigned to SONGs copied or moved to another SONG location in this way at the new position in the SONG management menu, if necessary.



Attention: The setting for the text source in the SONG settings will not be changed when copying SONGs! The LED in the **[Lyric]** button lights up even after copying the SONG to the new position, if the SONG is called up at its new position, although no internal text is stored for this SONG!

Use info texts

Finally, a tip about the lyrics display function: The lyrics linked to the SONGs do not necessarily have to be song lyrics, of course. Any texts that are available in the standard .txt format can be used, e.g. also notes on their registrations or on the title sequence, stage directions for the audience, and, and, and....

If a SONG with an internally assigned text also calls a playback with karaoke lyrics, it is even possible to switch between the internally linked text and the karaoke display during the playback!

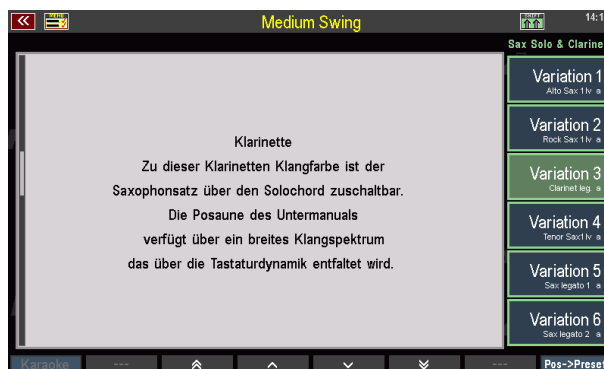
Factory info texts

Many factory SONGs in SEMPRA version 2.0 and higher contain info texts about the registrations found in the SONGs. These texts provide valuable information about the individual registrations as well as playing tips.

These texts were inserted by us as internal texts into the SONGs.

SONGs that contain such lyrics can be recognized by the LED in the **[Lyric]** button lighting up. After pressing the button the display changes to the text display. As a rule, individual text sections with detailed information about the respective preset are assigned to each of up to 6 presets of such SONGs.

Attention: The factory info texts are currently only available in German!





KEYSWERK Musikelektronik GmbH

Warbersche Str. 32

31675 Bückeburg

Tel.: 05722 905088

Internet <http://www.keyswerk.de>

E-Mail info@keyswerk.de