

Böhm
ORGELN | KEYBOARDS

SEMPRA 3.0 *PRO-LIB*

Installation and playing instructions



www.boehm-organs.com

Böhm famous organs - Laudate for SEMPRA 3.0 – Installation and playing instructions

Version 1.2

Art.-no. 43618AD

stand: 12.11.2024

The information contained in this documentation is subject to change without prior notice and does not constitute a commitment on the part of Keyswerk Musikelektronik GmbH does not represent any obligation.

The description is based on the information available at the time of printing.
at the time of printing.

Technical details are subject to change without notice,
and illustrations in this manual are reserved.

Keyswerk Musikelektronik GmbH & Co. KG cannot be held liable for program errors
and for incorrect information in the documentation and its consequences.
and their consequences.

© Keyswerk 2024

All rights reserved

Responsible for the content
KEYSWERK Musikelektronik GmbH
Sülbecker Str. 20-22
31688 Nienstädt
Germany
phone: 05722 - 905088
web: <http://www.boehm-organs.com>
e-mail: info@keyswerk.de

Content:

General information	4
Requirements for playing with the BFO Laudate	4
The BFO SONGs/SONG-Presets (“Setzer”)	5
Swell control on the lower and solo manual.....	6
59418a BBO-Laudate 3.0	6
59418b BBO-Laudate (SW) 3.0	8
Pedal stops	9
Button assignment for Classic Complete und Laudate	9
Further playing instructions	9
BFO Laudate installation.....	10
1. own user account for the church organ game	10
2. Install BBO Laudate data (SONG banks 101...104)	12
Calling up registrations (SONG presets)	13
BBO button preset.....	15
Appendix: SONGS (,Setzer‘) BFO CLASSIC COMPLETE and BFO Laudate	17

General information

BÖHM organs have always achieved exceptional results in the field of classical and sacred organ music. With the new sacral software “**Böhm Berühmte Orgeln (BBO)**” **Laudate** (English: Böhm Famous Organs Laudate) the SEMPRA 3.0 Pro-Lib offers a further significant increase in sound capabilities in this segment. The new **BBO/BFO Laudate** is the perfect complement to the sacral software **BFO CLASSIC COMPLETE** and is based on pieces from the hymnal, which also gives this software a special practical value for use in liturgical contexts.

The registrations of the new Laudate package are particularly organ-typical: Each chorale begins with a delicate voicing. The other 5 registrations build on each other, so the number of parts used increases steadily. The settings prepared for playing the chorale verses always form a finely tuned arc from simple to full registrations.

In each of the new registrations, **9 parts are pre-registered in the upper manual, 8 parts in the lower manual, 3 parts in the pedal and 1 part in the solo manual.**

It goes without saying that this fantastic-sounding organ package is also ideally suited for preludes.

Requirements for playing with the BFO Laudate

The registrations in the **BBO Laudate** were created in great detail and extensively. The basis for this is formed by the excellent individual and combined stops from the **BBO CLASSIC COMPLETE** software. From these registers and register combinations, the registrations in the **Laudate** software are created. Each timbre of the sacral and toccata sound material from the **BBO Classic Complete** package was first subjected to thorough testing. Detailed improvements were made in several registers. These come in the **BBO CLASSIC COMPLETE 3.0** and in the new **BBO Laudate** to full advantage.

Despite the optimization of individual registers, your own sacral registrations can of course be played again immediately, as all stops have remained in their usual positions.

To take full advantage of the **BBO Laudate**, your SEMPRA must have the following features:

- **SEMPRA 3.0 Pro-Lib**
- **BBO basic software 3.0** (Art.-no. 42615) and
- **BBO Classic Complete 3.0** (Art.-no. 42616) or the corresponding **update from BBO Classic Complete to version 3.0** (Art.-no. 42916)
- At least 2 AMADEUS-Pro-D sound modules and the **corresponding part extensions** (optional up to SE60, standard from SE70)

The BFO SONGs/SONG-Presets (“Setzer”)

The BFO Laudate package contains a total of 4 SONG banks on SONG bank numbers 101 to 104. Banks 101 and 102 once again contain the songs from the BFO CLASSIC-COMPLETE package **with different SONG bank and genre assignment** to the "original" BFO Classic Complete pack.

In addition, there are the SONG bank numbers 103 and 104 with the actual BFO Laudate registrations:

Bank 101: BFO Basics 1 (corresponds to **BFO Sakral** from Classic Complete 3.0) Genre “Sound Basics”
Bank 102: BFO Basics 2 (corresponds to **BFO Toccata** from Classic Complete 3.0) Genre “Sound Basics”
Bank 103: **BFO Laudate 1** with 64 SONGs Genre „Church/Worship“
Bank 104: **BFO Laudate 2** with 26 SONGs Genre „Church/Worship“

The division into the two genres **Sound Basics** and **Church/Worship** allows you to switch directly between the SONGs of the BFO CLASSIC-COMPLETE and the BFO Laudate by selecting the corresponding genre (SONG filter button [**Genre**] to the left of the display). Of course, it is also possible to select the respective SONG bank directly via the SONG filter [**Bank**]. More details on selecting SONGs can be found further down in these instructions.

As a SEMPRA connoisseur, you will have already noticed that the SONG bank numbers 101...104 overlap with the corresponding standard SONG banks (Sound Basics....Style-Basics 3) of SEMPRA from the entertainment area! **The BFO Laudate must therefore not be installed in an existing SEMPRA 3.0 account, but must always be installed in a separate user account for sacred organ playing.** We go into more detail in the section on **installing the BFO Laudate** from page 10 of this manual.

Note: *In the actual BBO Classic Complete 3.0 package (which is always present on your factory USB stick as a prerequisite for the BFO Laudate), you will find the corresponding SONG banks BFO Sacral and BFO Toccata on the SONG banks 121 and 122 already provided for this purpose in the earlier versions. Here, these SONGs are still assigned to the church/worship genre. These BFO Classic Complete banks 121 and 122 can still be installed in a universal user account for the light music software. More details in the separate operating instructions for the BFO Classic Complete software.*

Like the BFO CLASSIC-COMPLETE SONGs, each BFO Laudate SONG contains 6 individual registrations (global presets or, in church organ jargon, settings), which have been created true to style from the individual and combination stops of the software.

For many presets, it is possible to add a **tremulant** using **modulation wheel 1**.

By the way: In almost all registrations we have kept the volume of the individual stops predominantly at a value of 100. This makes it possible to quickly adjust the volume upwards (up to 127).

Swell control on the lower and solo manual

“Real” pipe organs distinguish between different **works**. In each work, one of the keyboards (manual or pedal) and the stops belonging to this keyboard (and mechanically connected to it) are combined. Among other things, the different effects of the swell pedal on the manual works are characteristic of this:

In the BFO Laudate registrations, the lower manual of the SEMPRA forms the so-called "**swell work**". The stops on this manual are influenced in volume by the swell pedal.

The **upper** manual (the middle manual in the three-manual SEMPRA organs) forms the so-called "**Hauptwerk**". As with a pipe organ Hauptwerk, its stops are **not** influenced by the foot swell, but always sound at the same volume regardless of the swell position. This applies equally to the stops of the solo manual (top manual on the three-manual SEMPRA models) and the stops of the pedal division, which also sound without being influenced by the swell.

In order to reproduce the swell functionality of large pipe organs, we have provided various options in the BBO packages. Two alternative swell functions are used in the installation data for the BFO Laudate and CLASSIC-COMPLETE.

The BFO Laudate software package includes two alternative installation folders:

59418a BBO-Laudate 3.0

59418b BBO-Laudate (SW) 3.0

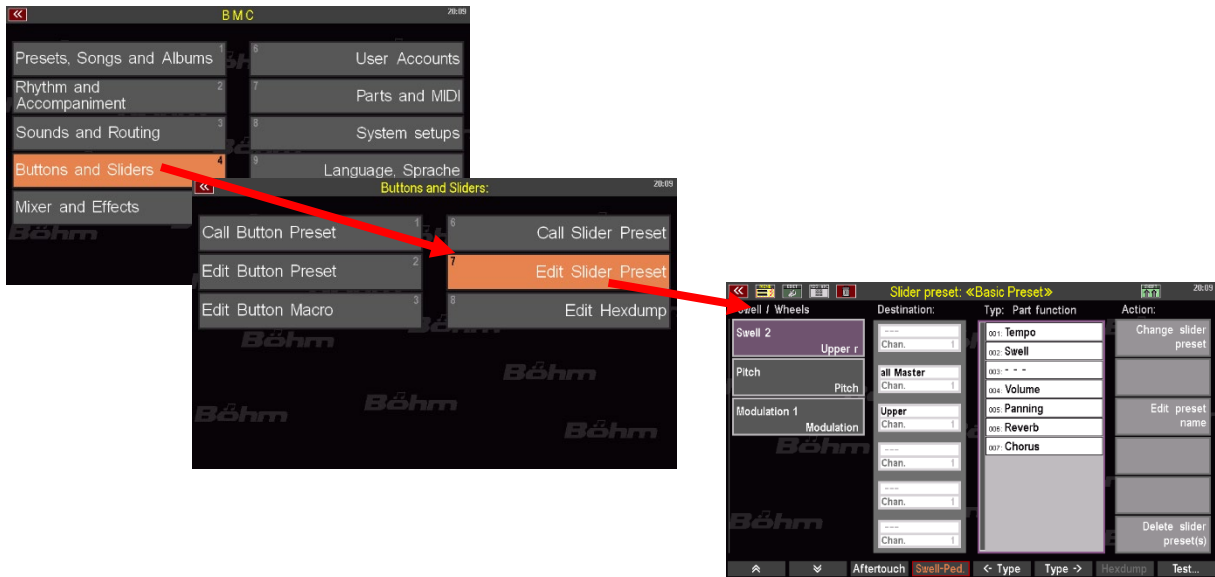
Note: The actual installation is described in the following section of these instructions.

The only difference between the two installation folders is the type of swell functions provided in the registrations. You can install either one or the other version (both versions occupy the same SONG banks).

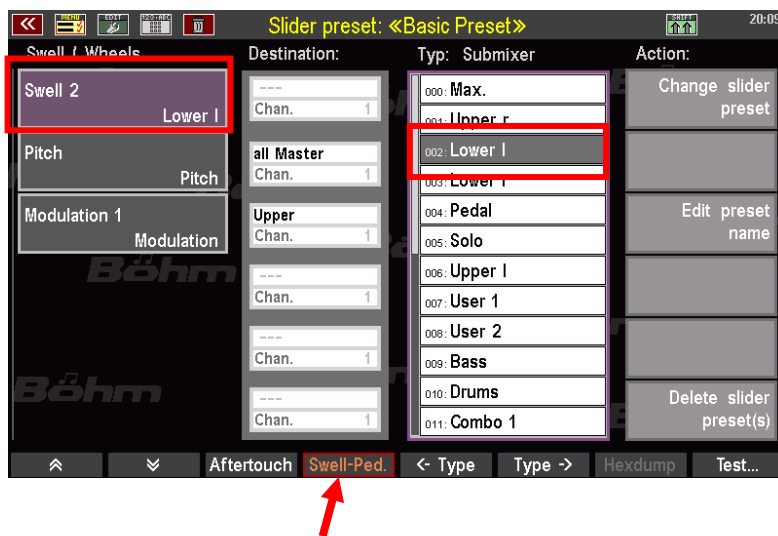
59418a BBO-Laudate 3.0

In this version, the submix controls in the included BBO Classic Complete and Laudate SONG banks 101...104 are assigned in the same way as in the BBO Classic Complete 3.0 standard software (art. no. 42616). Here, the swell on the desired manual can be simulated with a second swell pedal (SEMPRA SE100 or smaller SEMPRA models that are optionally equipped with a second swell pedal), to which the corresponding submix control is assigned.

To do this, the desired manual submix controller is assigned to the 2nd swell pedal via the BMC menu **buttons & slider functions (4) – Edit slider preset (7)**.

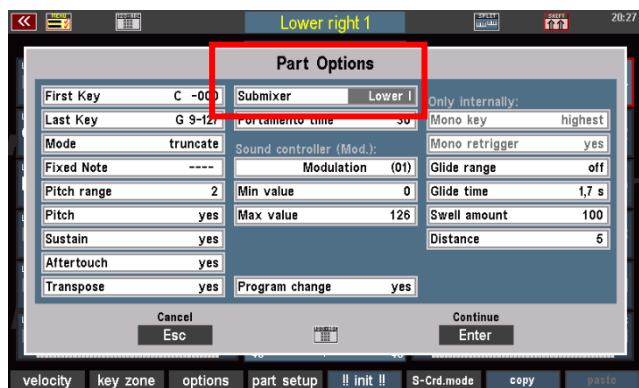


Tap the [F] button [Swell] at the bottom and select **Swell 2** at the top left. The Swell 2 can now be assigned the desired function.



Attention: You can find more detailed explanations on creating controller presets in the operating manual for your SEMPRO.

When the swell pedal is assigned to the **Lower left** submixer, swell pedal 2 affects the stops of the lower manual (swell work). For this purpose, the submixer **Lower left** was assigned to all lower parts in the part options of the SONG presets of these banks (including the parts of the group Lower right!). Thus, all Lower manual stops are assigned to the submixer Lower on the left and thus to the Swell 2 if it controls the submixer **Lower left**.



Alternatively, the **Upper manual** can also be played as a swell in this version. To do this, assign the **Upper right** submixer to Swell 2 in the slider assignment.

All upper parts (left and right) are assigned to the **upper right** submixer in the registrations of BBO SONG banks 121 / 122 and are therefore controlled by sill 2 if this is assigned to the upper right submixer.

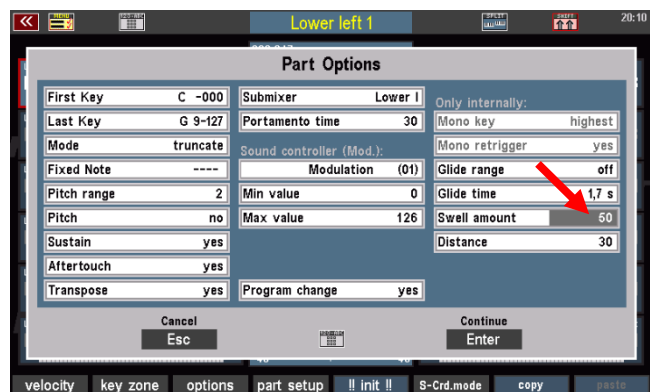
The following applies to both variants: the main swell pedal 1 must be turned up (as this sill controls the overall volume of all manual and pedal parts). Swell 2 can then be used to control the corresponding manual as a swell.

This version is therefore only interesting for SEMPRA instruments with 2 footrests.

59418b BBO-Laudate (SW) 3.0

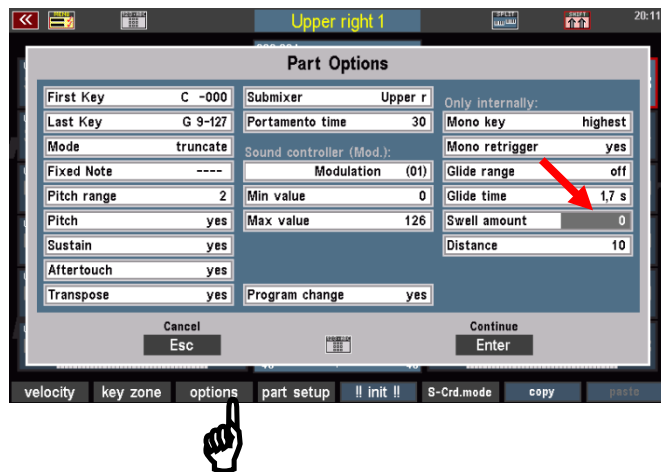
In this version, the swell functionality for the BBO Classi Complete and BBO Laudate SONG banks 101...104 is simulated even more realistically and **can be played perfectly even if only one swell pedal is present**. For the swell control of the individual registers, the individually adjustable parameter **swell amount** is used here (can be set in the **Part Options** window in the Part Editor).

The stops/parts of the lower manual (and also of the solo manual on the three-manual SEMPRA organs) are influenced by the swell by 50% (setting "50" for the swell proportion in the part options). This means that they are reduced in volume when the swell is reduced, but are not reduced to volume "0".



This also corresponds to the behavior of pipe organs, which also do not have a volume of "0" on the pipes. A certain wind strength is always present in the chests, so that the swell stops always sound at a certain basic volume even when the swell is lowered.

The stops/parts of the **Hauptwerk** (upper manual or middle manual on the three-manual SEMPRA organs) and the pedal are not influenced at all by the swell pedal, so the stops of these works sound at a fixed volume regardless of the foot swell position. For these parts, the swell component is set to "0" in the part options.



Pedal stops

The pedal section, with its special bass registers, forms the tonal foundation of the church organ. And while a single bass sound is often sufficient for popular music (after all, every band usually only has one bassist), the pedal of a pipe organ also lives from the sound variations that result from the different stops and possible combinations. Here, as in the manuals, several stops are usually combined to create an overall sound for the pedal.

Button assignment for Classic Complete und Laudate

The BFO Classic Complete package includes an own assignment (button preset) for the F buttons under the display. This button assignment is also used in the BFO Laudate registrations. Vocal phrases such as "Kyrie", "Hallelujah" and "Amen" as well as various bell effects can be called up here:



This button preset is used by the Laudate SONG presets and is called up with them, provided that the switching of the button assignments by the SONG presets is not prevented by the current setting of the **preset coupler** (button [Coupler] to the left of the display, checkmark set or not set).

Further playing instructions

In all registrations, the tracks of the automatic accompaniment are muted, recognizable by the lit LEDs in the **[Mute]** buttons for the accompaniment groups Drums, Bass and Combo 1...3. Therefore, neither drums nor accompaniment can be heard when you press the **[Start]** button in a selected Laudate preset. The mutes must first be deactivated to hear the accompaniment.

A pipe organ has no manual splits! All registrations of the Laudate package therefore do not contain a split point in the lower manual. This setting (lower split canceled) has been saved into the individual presets.

In the following section, we recommend creating an own user account for church organ playing during installation. Only the new **BFO Laudate** (which also contains the revised version of the Classic Complete package) and, if applicable, the BFO theater organ should be installed in this account. In addition to other advantages (overview), the removal of the lower split point by the church organ presets does not "interfere" in such a separate account, as no presets for light music are installed in this account. If this is the case and you would like to switch from a church organ to a popular music preset, please press the **[Clear Reg.]** button once before returning to one of the standard presets. This ensures that the global lower split intended for the standard presets is preset again.

But now you should get started right away! In the following section of these operating instructions, we explain how to install the **BFO Laudate** package on your SEMPRA.

BFO Laudate installation

1. own user account for the church organ game

Meanwhile, due to BBO CLASSIC COMPLETE and the new **BBO Laudate** package at SEMPRA 3.0, the amount of registrations for church organ playing has become so extensive that it is now **absolutely necessary to install these BBO packages in a separate user account!** This is not a question of memory space, but only of a better overview and compatibility of the various software packages with each other! We had already pointed out this necessity in the previous sections.

As already mentioned, the **BBO Laudate** also installs the SONG banks of the BBO CLASSIC COMPLETE package (which are regularly available anyway as a prerequisite). After the installation of **BBO Laudate**, the following SONG banks with church registrations are available:

Bank 101: BFO Basics 1 (corresponds to BFO Sakral from Classic Complete 3.0)	Genre "Sound Basics"
Bank 102: BFO Basics 2 (corresponds to BFO Toccata from Classic Complete 3.0)	Genre "Sound Basics"
Bank 103: BFO Laudate 1 with 64 SONGs	Genre „Church/Worship“
Bank 104: BFO Laudate 2 with 26 SONGs	Genre „Church/Worship“

As you can see in the list, the BBO CLASSIC COMPLETE SONG registrations were sorted into the genre "**Sound Basics**", while those of the LAUDATE package were sorted into the genre "**Church/Worship**". This means that by switching genres (SONG filter button **[Genre]**), you can quickly access either the Classic Complete registrations or those for the 90 chorales of the Laudate package.

If you were to install the **BBO Laudate** package in your main account (which also contains all the other SEMPRA registrations for light music), the company banks 101...104 with the SEMPRA Sound Basics and Style Basics would be overwritten by the corresponding **BBO Laudate SONG** banks 101...104.

Therefore, if you do not already have one on your SEMPRA, first set up your own user account for playing the sacred organ. If you want to play the pipe organ, simply switch to this user account in future. In this example, we will simply call the account „1 BBO Laudate 3.0“.



The image shows two screenshots from the SEMPRA 3.0 interface. The left screenshot shows the 'Create a new account' dialog box with the user name '1 BBO Laudate 3.0' and code number '0'. The right screenshot shows the 'Select account / Konto wählen' menu with '1 BBO Laudate 3.0' selected. The background of the right screenshot is a 'Welcome to SEMPRA 3.0' screen with the Böhm logo.

- Now create a new user account for the BBO sacral packages and start this account (for more information on user accounts, please refer to the corresponding chapter in the main instructions for SEMPRA 3.0).

When installing the **BBO Laudate** package for SEMPRA 3.0, the required data (4 SONG banks with the Laudate and Classic Complete SONGs/SONG presets) are installed from one of the two Laudate installation folders from the factory data stick you received with your SEMPRA.

As already mentioned, the prerequisite for using the Laudate package is the presence of the special samples from the basic package for Böhm – Famous Organs 3.0 (item no. 42615 or “59444 BBO-Basis 3.0” on the stick) and the sound data from the package Classic-Complete (“59445 BBO-Cl.Cpl.Basis 3.0” on the stick). These are therefore - if not already done - to be installed first according to the instructions for the BBO Classic Complete package.

If the samples and sound data for the BBO packages are already on the AMADEUS sound module(s) of your SEMPRA, they do not need to be reinstalled. **The folder “59415 BBO-Cl.Compl 3.0” must not be installed in the new user account!** The BBO CLASSIC COMPLETE Soundpresets and thus the stop names, which are also used in the **Laudate** registrations, are included in the new **Laudate** folders.

2. Install BBO Laudate data (SONG banks 101...104)

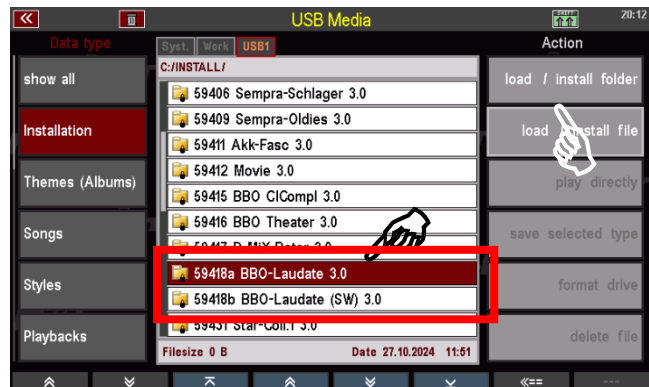
As already described on page 6, two alternative installation folders are available for the BBO Laudate software:

59418a BBO-Laudate 3.0 with swell control through 2nd swell pedal

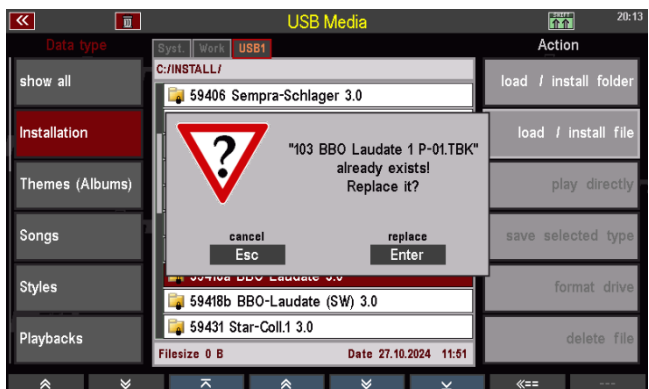
59418b BBO-Laudate (SW) 3.0 with swell control via individual swell amounts in the parts

Choose one of the two versions and install BBO Laudate from the desired folder as follows.

- In the USB menu on the left, select the **INSTALLATION** data type and place the cursor in the middle on the folder **59418a BBO-Laudate 3.0** or **59418b BBO-Laudate (SW) 3.0**.
- Tap on **Load/install folder** on the right.



- A confirmation prompt appears, confirm this with **[Enter]**. The data will now be installed.
- If you are installing via an existing **Laudate** installation, you may be informed during the installation that certain data has already been installed. In this case, confirm with **[Enter]** to reinstall the respective data.



It is not possible to install both Laudate versions in the same account, as the registers are in identical locations and are mutually exclusive!

It is also not possible to switch from one Laudate version to the other in the same account at a later date!

If you want to try out both versions, you must create a separate account for each version!

Calling up registrations (SONG presets)

Depending on the SONG filter mode selected, you have various options for selecting the registrations or SONGs:

SONG Filter „No Filter“ selected: You see the complete list of all songs in the active user account. Since we have created a separate account for the church organ playing, you will find only the songs of the **BBO Laudate** and **BBO CLASSIC COMPLETE** software here (and possibly those of the **BBO Theater Organ** package if it has also been installed in the church account).



The bank names are also displayed in the SONG fields on the left. You can recognize the registrations of the **BBO Laudate** by the bank names **BBO-Laudate 1** und **BBO-Laudate 2**, and those of the **BBO Classic Complete** by the bank names **BBO Sakral** and **BBO Toccata**, respectively. The bank names are also displayed in the SONG fields on the left.

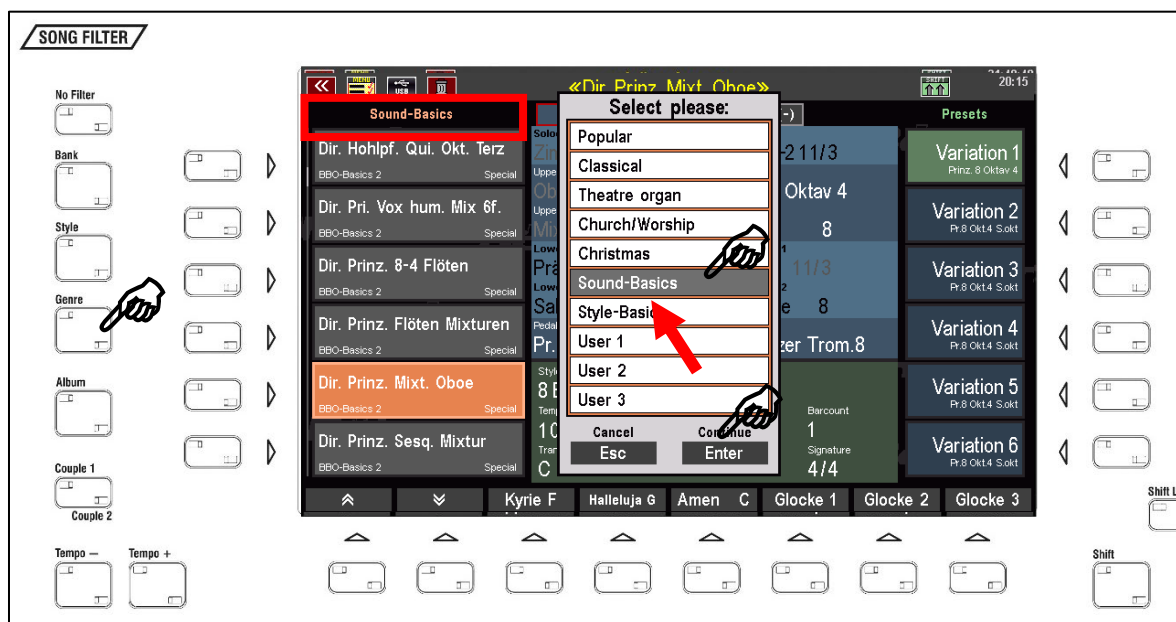
SONG Filter [Bank] selected: On the SONG banks **101** and **102**, you will find the BBO Classic Complete banks **BBO Sakral** bzw. **BBO Toccata**. Bank no. **103** contains the SONG bank **BBO Laudate 1** (64 SONGs) and bank no. 104 contains bank **BBO Laudate 2** (26 SONGs). Press the SONG Filter button **[Bank]** twice to select the bank; confirm the selected bank with **[Enter]**:



SONG Filter [Genre] selected: The BBO Laudate registrations can be found in the “Church/Worship” genre. Tap the Filter button **[Genre]** twice to display the genre selection list. Select the “Church/Worship” genre and confirm by pressing **[Enter]**.



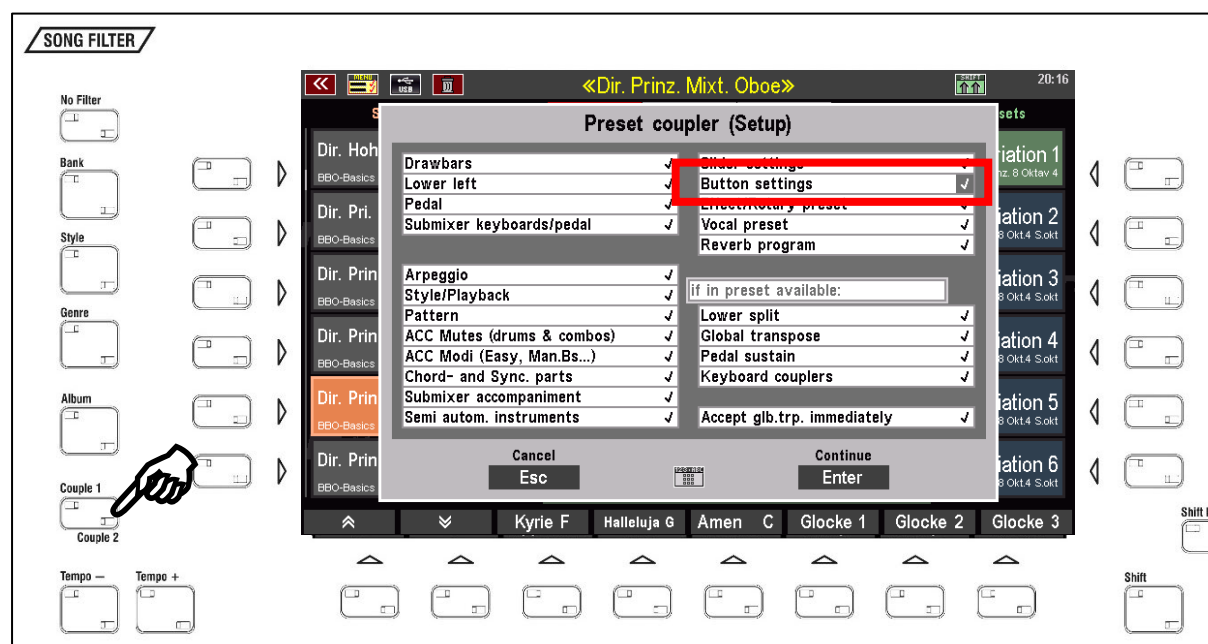
You will find the **BBO Classic Complete** registrations in the „**Sound Basics**“ genre. Tap the **[Genre]** button twice to display the genre selection list on the screen. Select the “Sound Basics” genre and confirm by pressing **[Enter]**.



BBO button preset

The SONG presets of the **Laudate** package use a special button preset (Changed assignment of the **[F]** buttons below the display, see page 9).

For this setting to be called up with the sacred SONG presets, the calling up of button assignments by the presets must be activated in the **PRESET COUPLER** settings:



You can of course also call up the button preset manually via the BMC menu, e.g. to use it in your own SONG presets:

- The button preset F56: **Sakral 1** can be accessed via the menu **Buttons & Sliders (4) / Call up Button preset (1)**:
- Confirm each time with **[Enter]** to accept the preset.



Appendix: SONGS („Setzer“) BFO CLASSIC COMPLETE and BFO Laudate

SONG bank 101 BBO Basics 1 (BBO Sacral)

101|001|Basis Reg. voll
 101|002|Flöten 1
 101|003|Flöten 2 Prinzipale
 101|004|Flöten 3
 101|005|Flöten 4
 101|006|Flöten Unda Maris (1)
 101|007|Flöten offen (1)
 101|008|Flöten offen (2)
 101|009|Flöten Gambe
 101|010|Flöten VoxCoel. (1)
 101|011|Flöten Trz. Qui. (1)
 101|012|Flöten Trz. Qui. (2)
 101|013|Flöten Unda Maris 2
 101|014|Flöten VoxCoel. (2)
 101|015|Prinz. VoxCoe. Kornett
 101|016|Salizional VoxCoelestis
 101|017|Ged. Vox. Ob. Mixtur
 101|018|Pri. Vox. ZR Mixturen
 101|019|Pri. VoxCoel. Kornett
 101|020|Pri. VoxCoel. Mixturen
 101|021|Flöten Tremulant
 101|022|Flöten off. (1) Tremulant
 101|023|Flöten off. (2) Tremulant
 101|024|Prinz. Flöten Tremulant
 101|025|Flöten Oboe Tremulant
 101|026|Prinz.8-4 Flöten (1)
 101|027|Prinz.8-4 Flöten (2)
 101|028|Prinz.8-4-2 Flöten
 101|029|Prinz.8-4-2 Korn. Mixtur
 101|030|Prinz.8-4 Scharf
 101|031|Prinz.8-4 Sch.-Mix. ZR (1)
 101|032|Prinz.8-4 Sch.-Mix. ZR (2)
 101|033|Prinz.8-4-2 Mixturen
 101|034|Prinz. 8-4-2 Mixt. ZR (2)
 101|035|Pr. Fl. 8-4-2 Mixturen
 101|036|Pr.Fl. 3 Mixturen
 101|037|Volles Werk
 .
 .
 .
 .
 .
 .
 101|059|H Flöten 1 Lm Handbass
 101|060|H Flöten 2 Lm Handbass
 101|061|H Flöten Trem. Lm Handb.
 101|062|H Flöten of. Tr. Handbass
 101|063|H Prinz. 8-4-2 Fl. Handb.
 101|064|H Prinz. 8-4-2 Mix. Handb.

SONG bank 102 BBO Basics 2 (BBO Toccata)

102|001|T Basis Reg. 2 voll
 102|002|T Flöten 1
 102|003|T Flöten 2 offen
 102|004|T Flöten 3 voll
 102|005|T Passion 1
 102|006|T Passion 2
 102|007|T Gedeckt
 102|008|T Gedeckt & Unda maris
 102|009|T Gedeckt Gambe Prinz.
 102|010|T Passion 3
 102|011|T Hohlpf. Quint Okt. Terz
 102|012|T Flötensatz Larigot
 102|013|T Fl.-Satz Undam. Gemsh.
 102|014|Flöten Voix celeste
 102|015|T Prinz. Vox hum. Kornett
 102|016|T Salizional Hoernlein 2f
 102|017|T Fl. Dulzian Oboe Mixtur
 102|018|T Prinz. Zungen Mixtur
 102|019|T Prinzip. Kornett Flt. ha.
 102|020|T Pri. Vox hum. Mixtur 6f.
 102|021|T Flöten Tremulant
 102|022|T Flöten weit Tremulant
 102|023|T Flöten Oboe Tremulant
 102|024|T Präst. Flöten Tremulant
 102|025|T Prinzipal Basis
 102|026|T Prinz. Tromp. Mixtur
 102|027|T Prinz. 8-4 Flöten
 102|028|T Prinz. 8-4-2 Flt. Mixtur
 102|029|T Prinz. Dulzian Kornett
 102|030|T Prinz. Mixt. Trompete
 102|031|T Prinz. Unda. Ob. Mixtur
 102|032|T Prinz. Sesq. Mixtur
 102|033|T Prinz. Mixturen Oboe
 102|034|T Prinz. Tromp.4 Zimbel
 102|035|T Prinz. Fl.-Satz Mixturen
 102|036|T Prinz. Flöten Mixturen
 102|037|T Volles Werk
 102|038|Dir. Flöten 1
 102|039|Dir. Flöten 2 offen
 102|040|Dir. Flöten 3 voll
 102|041|Dir. Gedeckt & Unda maris
 102|042|Dir. Gedackt Gambe Prinz.
 102|043|Dir. Hohlpf. Qui. Okt. Terz
 102|044|Dir. Flötensatz Larigot
 102|045|Dir. Fl.-Satz Unda. Gemsh.
 102|046|Dir. Flöten Voix celeste
 102|047|Dir. Prinz. Vox hum. Korn.
 102|048|Dir. Salizional Hoernl. 2f.
 102|049|Dir. Fl. Dulzian Oboe Mixt
 102|050|Dir. Prinz. Zungen Mixtur
 102|051|Dir. Prinzip. Korn. Flt. ha.
 102|052|Dir. Pri. Vox hum. Mix 6f.
 102|053|Dir. Flöten Tremulant

102|054|Dir. Flöten Oboe Tremulant
 102|055|Dir. Prinzipal Basis
 102|056|Dir. Prinz. Tromp. Mixtur
 102|057|Dir. Prinz. 8-4 Flöten
 102|058|Dir. Prinz. Unda. Ob. Mixt.
 102|059|Dir. Prinz. Sesq. Mixtur
 102|060|Dir. Prinz. Mixt. Oboe
 102|061|Dir. Prinz. Tromp.4 Zimbel
 102|062|Dir. Prinz. Fl.-Satz Mixt.
 102|063|Dir. Prinz. Flöten Mixturen
 102|064|Dir. Volles Werk

SONG bank 103 BBO Laudate 1

103|001|Macht hoch die Tür
 103|002|Es komm ein Schiff geladen
 103|003|Wie soll ich dich empfangen
 103|004|Tochter Zion
 103|005|Die Nacht ist vorgedrungen
 103|006|Wir sagen euch an den I. Advent
 103|007|Vom Himmel hoch
 103|008|Lobt Gott ihr Christen
 103|009|Es ist ein Ros entsprungen
 103|010|Nun singet und seid froh
 103|011|Ich steh an deiner Krippen hier
 103|012|O du fröhliche
 103|013|Herbei o ihr Gläubigen
 103|014|Stille Nacht
 103|015|Hört der Engel helle Lieder
 103|016|Nun laßt uns gehn und treten
 103|017|Jesus ist kommen
 103|018|Wie schön leuchtet der M.stern
 103|019|Wir danken dir Herr Jesu Christ
 103|020|Herzliebster Jesu
 103|021|O Haupt voll Blut und Wunden
 103|022|Nun gehören unsre Herzen
 103|023|Holz auf Jesu Schulter
 103|024|Christ ist erstanden
 103|025|Wir wollen alle fröhlich sein
 103|026|Gelobt sei Gott im höchsten
 103|027|Auf auf mein Herz mit Freuden
 103|028|Er ist erstanden Halleluja
 103|029|Nun bitten wir den heiligen G.
 103|030|O heiliger Geist o heilig. Gott
 103|031|Wachet auf ruft uns die Stimme
 103|032|Liebster Jesu wir sind hier
 103|033|Gott ist gegenwärtig
 103|034|Tut mir auf die schöne Pforte
 103|035|Du hast uns Herr gerufen
 103|036|Komm Herr segne uns
 103|037|Beware uns Gott
 103|038|Allein Gott in der Höh sei Ehr
 103|039|Ich bin getauf auf deinen Namen
 103|040|Gott der du alles Leben schufst
 103|041|Kommt her ihr seid geladen
 103|042|Schmücke dich o liebe Seele

103|043|Das sollt ihr, Jesu Jünger, nie
 103|044|Lob Gott getrost mit singen
 103|045|Herz und Herz vereint zusammen
 103|046|Ich lobe meinen Gott
 103|047|Wohl denen die da wandeln
 103|048|Aus tiefer Not schrei ich zu d.
 103|049|Du meine Seele singe
 103|050|Lobe den Herren, den mächtigen
 103|051|Nun danket alle Gott
 103|052|Nun danket all und bringet Ehr
 103|053|Sollt ich meinem Gott nicht s.
 103|054|Wunderbarer König
 103|055|Dir, dir o Höchster will ich s.
 103|056|Bis hierher hat uns Gott gebr.
 103|057|Großer Gott wir loben dich
 103|058|Such wer da will ein ander Ziel
 103|059|Ach bleib mit deiner Gnade
 103|060|Ich freu mich in dem Herren
 103|061|Alles ist an Gottes Segen
 103|062|Jesus nimmt die Sünder an
 103|063|Mir ist Erbarmung widerfahren
 103|064|Befiehl du deine Wege

SONG bank 104 BBO Laudate 2

104|001|Ein feste Burg ist unser Gott
 104|002|Von Gott will ich nicht lassen
 104|003|Was Gott tut das ist wohlgetan
 124|004|So nimm denn meine Hände
 104|005|Jesu geh voran
 104|006|Jesu meine Freude
 104|007|In dir ist Freude
 104|008|Stern auf den ich schaue
 104|009|Aus meines Herzens Grunde
 104|010|Die güldne Sonne
 104|011|Morgenglanz der Ewigkeit
 104|012|Er weckt mich alle Morgen
 104|013|Der Mond ist aufgegangen
 104|014|Abend ward bald kommt die Nacht
 104|015|Bleib bei mir Herr
 104|016|Wie lieblich ist der Maien
 104|017|Geh aus mein Herz
 104|018|Wir pflügen und wir streuen
 104|019|Valet will ich dir geben
 104|020|Jesu meine Zuversicht
 104|021|Stern über Bethlehem
 104|022|Mein Schöpfer steh mir bei
 104|023|Weiß ich den Weg auch nicht
 104|024|Harre meine Seele
 104|025|Fürchte dich nicht
 104|026|Ins Wasser fällt ein Stein



KEYSWERK Musikelektronik GmbH
Sülbecker Str. 20-22
31688 Nienstädt
Germany
phone: 05722 - 905088
web: <http://www.boehm-organs.com>
e-mail: info@keyswerk.de